

**BAF250b rabbit pAb****Cat#: orb769784 (Manual)**

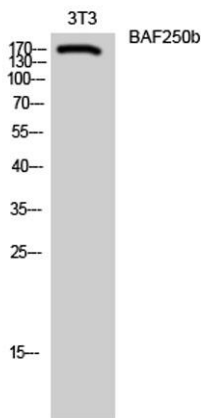
For research use only. Not intended for diagnostic use.

<b>Product Name</b>	BAF250b rabbit pAb
<b>Host species</b>	Rabbit
<b>Applications</b>	WB;IHC;IF;ELISA
<b>Species Cross-Reactivity</b>	Human;Rat
<b>Recommended dilutions</b>	Western Blot: 1/500 - 1/2000. Immunohistochemistry: 1/100 - 1/300. Immunofluorescence: 1/200 - 1/1000. ELISA: 1/10000. Not yet tested in other applications.
<b>Immunogen</b>	The antiserum was produced against synthesized peptide derived from human BAF250B. AA range:1371-1420
<b>Specificity</b>	BAF250b Polyclonal Antibody detects endogenous levels of BAF250b protein.
<b>Formulation</b>	Liquid in PBS containing 50% glycerol, 0.5% BSA and 0.02% sodium azide..
<b>Storage</b>	Store at -20°C. Avoid repeated freeze-thaw cycles.
<b>Protein Name</b>	AT-rich interactive domain-containing protein 1B
<b>Gene Name</b>	ARID1B
<b>Cellular localization</b>	Nucleus .
<b>Purification</b>	The antibody was affinity-purified from rabbit antiserum by affinity-chromatography using epitope-specific immunogen.
<b>Clonality</b>	Polyclonal

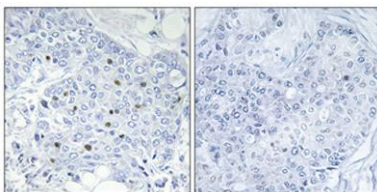
<b>Concentration</b>	1 mg/ml
<b>Observed band</b>	170kD
<b>Human Gene ID</b>	57492
<b>Human Swiss-Prot Number</b>	Q8NFD5
<b>Alternative Names</b>	ARID1B; BAF250B; DAN15; KIAA1235; OSA2; AT-rich interactive domain-containing protein 1B; ARID domain-containing protein 1B; BRG1-associated factor 250b; BAF250B; BRG1-binding protein hELD/OSA1; Osa homolog 2; hOsa2; p250R

**Background**

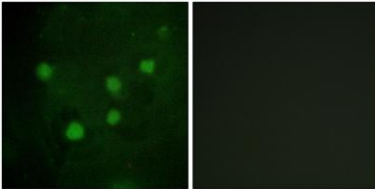
This locus encodes an AT-rich DNA interacting domain-containing protein. The encoded protein is a component of the SWI/SNF chromatin remodeling complex and may play a role in cell-cycle activation. The protein encoded by this locus is similar to AT-rich interactive domain-containing protein 1A. These two proteins function as alternative, mutually exclusive ARID-subunits of the SWI/SNF complex. The associated complexes play opposing roles. Alternatively spliced transcript variants encoding different isoforms have been described. [provided by RefSeq, Feb 2012],



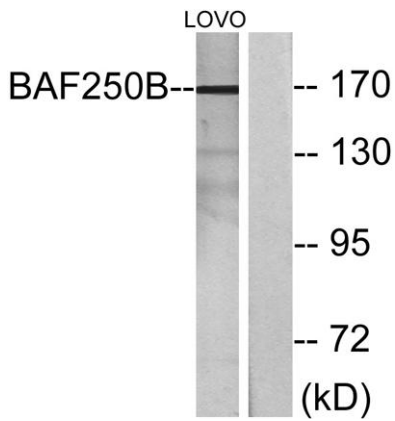
**Western Blot analysis of 3T3 cells using BAF250b Polyclonal Antibody diluted at 1:1000**



**Immunohistochemical analysis of paraffin-embedded Human breast cancer. Antibody was diluted at 1:100(4° overnight). High-pressure and temperature Tris-EDTA,pH8.0 was used for antigen retrieval. Negative control (right) obtained from antibody was pre-absorbed by immunogen peptide.**



**Immunofluorescence analysis of HUVEC cells, using BAF250B Antibody. The picture on the right is blocked with the synthesized peptide.**



**Western blot analysis of lysates from LOVO cells, using BAF250B Antibody. The lane on the right is blocked with the synthesized peptide.**