

**A1Up rabbit pAb****Cat#: orb769735 (Manual)**

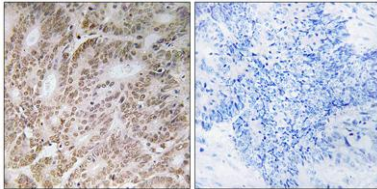
For research use only. Not intended for diagnostic use.

<b>Product Name</b>	A1Up rabbit pAb
<b>Host species</b>	Rabbit
<b>Applications</b>	WB;IHC;IF;ELISA
<b>Species Cross-Reactivity</b>	Human;Mouse
<b>Recommended dilutions</b>	Western Blot: 1/500 - 1/2000. Immunohistochemistry: 1/100 - 1/300. ELISA: 1/40000. Not yet tested in other applications.
<b>Immunogen</b>	The antiserum was produced against synthesized peptide derived from human UBQLN4. AA range:201-250
<b>Specificity</b>	A1Up Polyclonal Antibody detects endogenous levels of A1Up protein.
<b>Formulation</b>	Liquid in PBS containing 50% glycerol, 0.5% BSA and 0.02% sodium azide..
<b>Storage</b>	Store at -20°C. Avoid repeated freeze-thaw cycles.
<b>Protein Name</b>	Ubiquilin-4
<b>Gene Name</b>	UBQLN4
<b>Cellular localization</b>	Nucleus . Cytoplasm . Chromosome . Endoplasmic reticulum . Cytoplasm, perinuclear region . Cytoplasmic vesicle, autophagosome . Colocalizes with the proteasome, both in nucleus and cytoplasm (PubMed:15280365). Exported from the nucleus following interacti
<b>Purification</b>	The antibody was affinity-purified from rabbit antiserum by affinity-chromatography using epitope-specific immunogen.

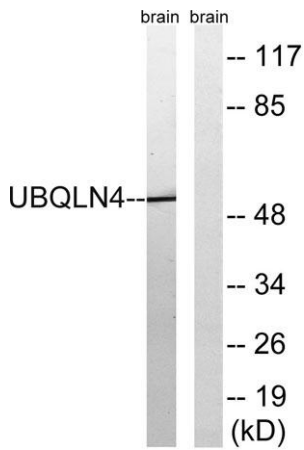
<b>Clonality</b>	Polyclonal
<b>Concentration</b>	1 mg/ml
<b>Observed band</b>	54kD
<b>Human Gene ID</b>	56893
<b>Human Swiss-Prot Number</b>	Q9NRR5
<b>Alternative Names</b>	UBQLN4; C1orf6; CIP75; UBIN; Ubiquilin-4; Ataxin-1 interacting ubiquitin-like protein; A1Up; Ataxin-1 ubiquitin-like-interacting protein A1U; Connexin43-interacting protein of 75 kDa; CIP75

**Background**

PTM:Phosphorylated upon DNA damage, probably by ATM or ATR.,similarity:Contains 1 UBA domain.,similarity:Contains 1 ubiquitin-like domain.,subcellular location:May associate with the endoplasmic reticulum.,subunit:Homodimer. Binds SCA1. Binds signal sequences of proteins that are targeted to the endoplasmic reticulum.,tissue specificity:Highly expressed in pancreas, kidney, skeletal muscle, heart and throughout the brain, and at lower levels in placenta, lung and liver.,



**Immunohistochemistry analysis of paraffin-embedded human colon carcinoma tissue, using UBQLN4 Antibody. The picture on the right is blocked with the synthesized peptide.**



**Western blot analysis of lysates from mouse brain, using UBQLN4 Antibody. The lane on the right is blocked with the synthesized peptide.**