

20S Proteasome $\alpha 3$ (phospho Ser250) rabbit pAb**Cat#: orb769731 (Manual)**

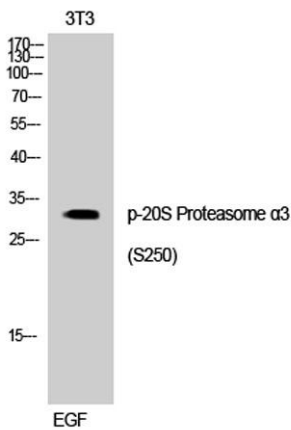
For research use only. Not intended for diagnostic use.

Product Name	20S Proteasome $\alpha 3$ (phospho Ser250) rabbit pAb
Host species	Rabbit
Applications	WB;IHC;IF;ELISA
Species Cross-Reactivity	Human;Mouse;Rat
Recommended dilutions	Western Blot: 1/500 - 1/2000. Immunohistochemistry: 1/100 - 1/300. ELISA: 1/10000. Not yet tested in other applications.
Immunogen	The antiserum was produced against synthesized peptide derived from human Proteasome alpha3 around the phosphorylation site of Ser250. AA range:206-255
Specificity	Phospho-20S Proteasome $\alpha 3$ (S250) Polyclonal Antibody detects endogenous levels of 20S Proteasome $\alpha 3$ protein only when phosphorylated at S250.
Formulation	Liquid in PBS containing 50% glycerol, 0.5% BSA and 0.02% sodium azide..
Storage	Store at -20°C. Avoid repeated freeze-thaw cycles.
Protein Name	Proteasome subunit alpha type-3
Gene Name	PSMA3
Cellular localization	Cytoplasm . Nucleus . Translocated from the cytoplasm into the nucleus following interaction with AKIRIN2, which bridges the proteasome with the nuclear import receptor IPO9. .
Purification	The antibody was affinity-purified from rabbit antiserum by affinity-chromatography using epitope-specific immunogen.

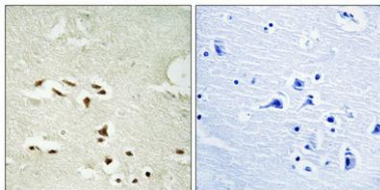
Clonality	Polyclonal
Concentration	1 mg/ml
Observed band	32kD
Human Gene ID	5684
Human Swiss-Prot Number	P25788
Alternative Names	PSMA3; HC8; PSC8; Proteasome subunit alpha type-3; Macropain subunit C8; Multicatalytic endopeptidase complex subunit C8; Proteasome component C8

Background

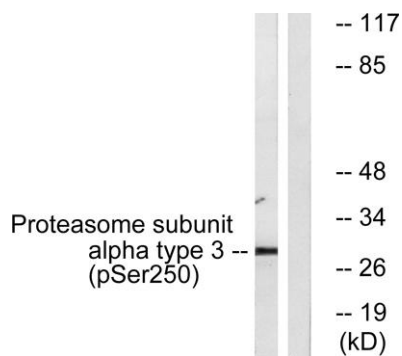
The proteasome is a multicatalytic proteinase complex with a highly ordered ring-shaped 20S core structure. The core structure is composed of 4 rings of 28 non-identical subunits; 2 rings are composed of 7 alpha subunits and 2 rings are composed of 7 beta subunits. Proteasomes are distributed throughout eukaryotic cells at a high concentration and cleave peptides in an ATP/ubiquitin-dependent process in a non-lysosomal pathway. An essential function of a modified proteasome, the immunoproteasome, is the processing of class I MHC peptides. This gene encodes a member of the peptidase T1A family, that is a 20S core alpha subunit. Two alternative transcripts encoding different isoforms have been identified. [provided by RefSeq, Jul 2008],



Western Blot analysis of 3T3 cells using Phospho-20S Proteasome α 3 (S250) Polyclonal Antibody



Immunohistochemical analysis of paraffin-embedded Human brain. Antibody was diluted at 1:100(4° overnight). High-pressure and temperature Tris-EDTA,pH8.0 was used for antigen retrieval. Negative control (right) obtained from antibody was pre-absorbed by i



Western blot analysis of lysates from NIH/3T3 cells treated with EGF 200ng/ml 30', using Proteasome alpha3 (Phospho-Ser250) Antibody. The lane on the right is blocked with the phospho peptide.