

MEK-7 (phospho Ser271) rabbit pAb**Cat#: orb769708 (Manual)**

For research use only. Not intended for diagnostic use.

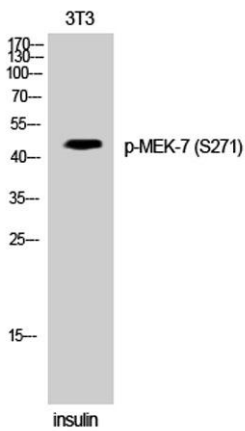
| | |
|---------------------------------|--|
| Product Name | MEK-7 (phospho Ser271) rabbit pAb |
| Host species | Rabbit |
| Applications | WB;IHC;IF;ELISA |
| Species Cross-Reactivity | Human;Mouse;Rat |
| Recommended dilutions | Western Blot: 1/500 - 1/2000. Immunohistochemistry: 1/100 - 1/300. ELISA: 1/20000. Not yet tested in other applications. |
| Immunogen | The antiserum was produced against synthesized peptide derived from human MAP2K7 around the phosphorylation site of Ser271. AA range:236-285 |
| Specificity | Phospho-MEK-7 (S271) Polyclonal Antibody detects endogenous levels of MEK-7 protein only when phosphorylated at S271. |
| Formulation | Liquid in PBS containing 50% glycerol, 0.5% BSA and 0.02% sodium azide.. |
| Storage | Store at -20°C. Avoid repeated freeze-thaw cycles. |
| Protein Name | Dual specificity mitogen-activated protein kinase kinase 7 |
| Gene Name | MAP2K7 |
| Cellular localization | Nucleus. Cytoplasm . |
| Purification | The antibody was affinity-purified from rabbit antiserum by affinity-chromatography using epitope-specific immunogen. |
| Clonality | Polyclonal |

Explore. Bioreagents.

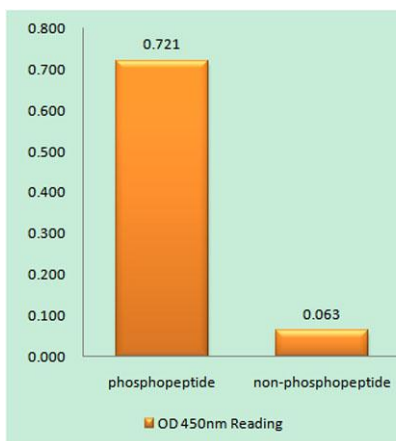
| | |
|--------------------------------|--|
| Concentration | 1 mg/ml |
| Observed band | 47kD |
| Human Gene ID | 5609 |
| Human Swiss-Prot Number | O14733 |
| Alternative Names | MAP2K7; JNKK2; MEK7; MKK7; PRKMK7; SKK4; Dual specificity mitogen-activated protein kinase kinase 7; MAP kinase kinase 7; MAPKK 7; JNK-activating kinase 2; MAPK/ERK kinase 7; MEK 7; Stress-activated protein kinase kinase 4; SAPK kinase 4; S |

Background

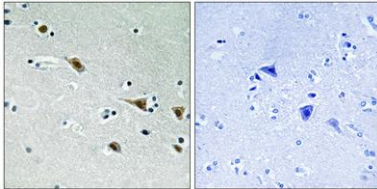
The protein encoded by this gene is a dual specificity protein kinase that belongs to the MAP kinase kinase family. This kinase specifically activates MAPK8/JNK1 and MAPK9/JNK2, and this kinase itself is phosphorylated and activated by MAP kinase kinase kinases including MAP3K1/MEKK1, MAP3K2/MEKK2, MAP3K3/MEKK5, and MAP4K2/GCK. This kinase is involved in the signal transduction mediating the cell responses to proinflammatory cytokines, and environmental stresses. Alternative splicing results in multiple transcript variants. [provided by RefSeq, Jul 2014],



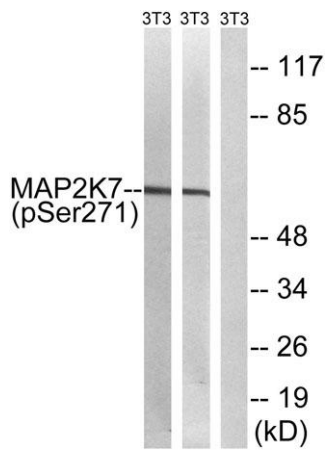
Western Blot analysis of 3T3 cells using Phospho-MEK-7 (S271) Polyclonal Antibody



Enzyme-Linked Immunosorbent Assay (Phospho-ELISA) for Immunogen Phosphopeptide (Phospho-left) and Non-Phosphopeptide (Phospho-right), using MAP2K7 (Phospho-Ser271) Antibody



Immunohistochemistry analysis of paraffin-embedded human brain, using MAP2K7 (Phospho-Ser271) Antibody. The picture on the right is blocked with the phospho peptide.



Western blot analysis of lysates from NIH/3T3 cells treated with insulin 0.01U/ml 15' and NIH/3T3 cells treated with EGF 200ng/ml 30', using MAP2K7 (Phospho-Ser271) Antibody. The lane on the right is blocked with the phospho peptide.