

**ERK 3 (phospho Ser189) rabbit pAb****Cat#: orb769691 (Manual)**

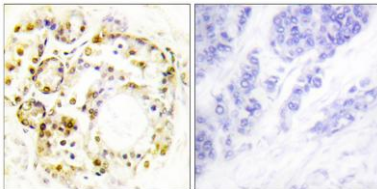
For research use only. Not intended for diagnostic use.

<b>Product Name</b>	ERK 3 (phospho Ser189) rabbit pAb
<b>Host species</b>	Rabbit
<b>Applications</b>	WB;IHC;IF;ELISA
<b>Species Cross-Reactivity</b>	Human;Mouse;Rat
<b>Recommended dilutions</b>	Western Blot: 1/500 - 1/2000. Immunohistochemistry: 1/100 - 1/300. ELISA: 1/5000. Not yet tested in other applications.
<b>Immunogen</b>	The antiserum was produced against synthesized peptide derived from human ERK3 around the phosphorylation site of Ser189. AA range:155-204
<b>Specificity</b>	Phospho-ERK 3 (S189) Polyclonal Antibody detects endogenous levels of ERK 3 protein only when phosphorylated at S189.
<b>Formulation</b>	Liquid in PBS containing 50% glycerol, 0.5% BSA and 0.02% sodium azide..
<b>Storage</b>	Store at -20°C. Avoid repeated freeze-thaw cycles.
<b>Protein Name</b>	Mitogen-activated protein kinase 6
<b>Gene Name</b>	MAPK6
<b>Cellular localization</b>	Cytoplasm . Nucleus . Translocates to the cytoplasm following interaction with MAPKAPK5. .
<b>Purification</b>	The antibody was affinity-purified from rabbit antiserum by affinity-chromatography using epitope-specific immunogen.
<b>Clonality</b>	Polyclonal

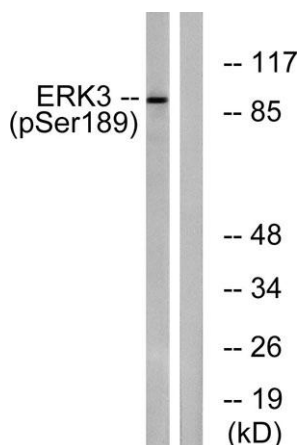
<b>Concentration</b>	1 mg/ml
<b>Observed band</b>	90kD
<b>Human Gene ID</b>	5597
<b>Human Swiss-Prot Number</b>	Q16659
<b>Alternative Names</b>	MAPK6; ERK3; PRKM6; Mitogen-activated protein kinase 6; MAP kinase 6; MAPK 6; Extracellular signal-regulated kinase 3; ERK-3; MAP kinase isoform p97; p97-MAPK

## Background

The protein encoded by this gene is a member of the Ser/Thr protein kinase family, and is most closely related to mitogen-activated protein kinases (MAP kinases). MAP kinases also known as extracellular signal-regulated kinases (ERKs), are activated through protein phosphorylation cascades and act as integration points for multiple biochemical signals. This kinase is localized in the nucleus, and has been reported to be activated in fibroblasts upon treatment with serum or phorbol esters. [provided by RefSeq, Jul 2008],



**Immunohistochemistry analysis of paraffin-embedded human breast carcinoma, using ERK3 (Phospho-Ser189) Antibody. The picture on the right is blocked with the phospho peptide.**



**Western blot analysis of lysates from mouse brain, using ERK3 (Phospho-Ser189) Antibody. The lane on the right is blocked with the phospho peptide.**



Explore. Bioreagents.

[www.biorbyt.com](http://www.biorbyt.com)