

**PKC  $\alpha$  (phospho Tyr658) rabbit pAb****Cat#: orb769636 (Manual)**

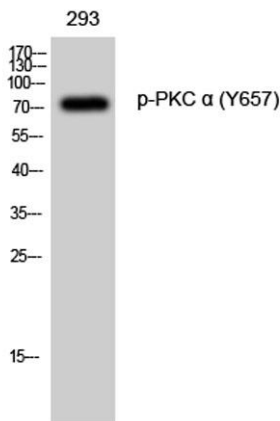
For research use only. Not intended for diagnostic use.

<b>Product Name</b>	PKC $\alpha$ (phospho Tyr658) rabbit pAb
<b>Host species</b>	Rabbit
<b>Applications</b>	WB;IHC
<b>Species Cross-Reactivity</b>	Human;Mouse;Rat
<b>Recommended dilutions</b>	WB 1:500-2000;IHC-p 1:50-300
<b>Immunogen</b>	The antiserum was produced against synthesized peptide derived from human PKC alpha around the phosphorylation site of Tyr657. AA range:623-672
<b>Specificity</b>	Phospho-PKC $\alpha$ (Y657) Polyclonal Antibody detects endogenous levels of PKC $\alpha$ protein only when phosphorylated at Y657.
<b>Formulation</b>	Liquid in PBS containing 50% glycerol, 0.5% BSA and 0.02% sodium azide..
<b>Storage</b>	Store at -20°C. Avoid repeated freeze-thaw cycles.
<b>Protein Name</b>	Protein kinase C alpha type
<b>Gene Name</b>	PRKCA
<b>Cellular localization</b>	Cytoplasm . Cell membrane ; Peripheral membrane protein . Mitochondrion membrane ; Peripheral membrane protein . Nucleus .
<b>Purification</b>	The antibody was affinity-purified from rabbit antiserum by affinity-chromatography using epitope-specific immunogen.
<b>Clonality</b>	Polyclonal

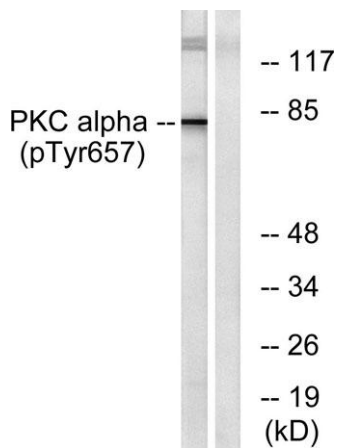
<b>Concentration</b>	1 mg/ml
<b>Observed band</b>	80kD
<b>Human Gene ID</b>	5578
<b>Human Swiss-Prot Number</b>	P17252
<b>Alternative Names</b>	PRKCA; PKCA; PRKACA; Protein kinase C alpha type; PKC-A; PKC-alpha

**Background**

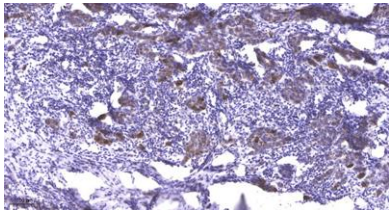
Protein kinase C (PKC) is a family of serine- and threonine-specific protein kinases that can be activated by calcium and the second messenger diacylglycerol. PKC family members phosphorylate a wide variety of protein targets and are known to be involved in diverse cellular signaling pathways. PKC family members also serve as major receptors for phorbol esters, a class of tumor promoters. Each member of the PKC family has a specific expression profile and is believed to play a distinct role in cells. The protein encoded by this gene is one of the PKC family members. This kinase has been reported to play roles in many different cellular processes, such as cell adhesion, cell transformation, cell cycle checkpoint, and cell volume control. Knockout studies in mice suggest that this kinase may be a fundamental regulator of cardiac contractility and Ca(2+) handling in myocytes. [provided by RefSeq, Jul 2]



**Western Blot analysis of 293 cells using Phospho-PKC  $\alpha$  (Y657) Polyclonal Antibody diluted at 1:1000**



**Western blot analysis of lysates from COLO205 cells, using PKC alpha (Phospho-Tyr657) Antibody. The lane on the right is blocked with the phospho peptide.**



**Immunohistochemical analysis of paraffin-embedded human Breast cancer. 1, Antibody was diluted at 1:200(4° overnight). 2, Tris-EDTA,pH9.0 was used for antigen retrieval. 3,Secondary antibody was diluted at 1:200(room temperature, 45min).**