

**ARF GAP1 rabbit pAb****Cat#: orb769628 (Manual)**

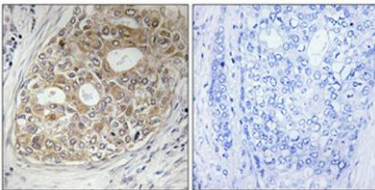
For research use only. Not intended for diagnostic use.

<b>Product Name</b>	ARF GAP1 rabbit pAb
<b>Host species</b>	Rabbit
<b>Applications</b>	WB;IHC;IF;ELISA
<b>Species Cross-Reactivity</b>	Human;Mouse;Rat;Monkey;Bovine
<b>Recommended dilutions</b>	Western Blot: 1/500 - 1/2000. Immunohistochemistry: 1/100 - 1/300. Immunofluorescence: 1/200 - 1/1000. ELISA: 1/20000. Not yet tested in other applications.
<b>Immunogen</b>	The antiserum was produced against synthesized peptide derived from human ARFGAP1. AA range:171-220
<b>Specificity</b>	ARF GAP1 Polyclonal Antibody detects endogenous levels of ARF GAP1 protein.
<b>Formulation</b>	Liquid in PBS containing 50% glycerol, 0.5% BSA and 0.02% sodium azide..
<b>Storage</b>	Store at -20°C. Avoid repeated freeze-thaw cycles.
<b>Protein Name</b>	ADP-ribosylation factor GTPase-activating protein 1
<b>Gene Name</b>	ARFGAP1
<b>Cellular localization</b>	Cytoplasm . Golgi apparatus . Associates with the Golgi complex. .
<b>Purification</b>	The antibody was affinity-purified from rabbit antiserum by affinity-chromatography using epitope-specific immunogen.
<b>Clonality</b>	Polyclonal

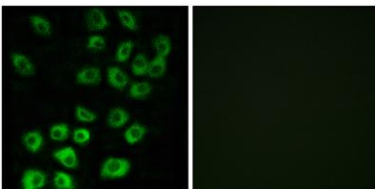
<b>Concentration</b>	1 mg/ml
<b>Observed band</b>	48kD
<b>Human Gene ID</b>	55738
<b>Human Swiss-Prot Number</b>	Q8N6T3
<b>Alternative Names</b>	ARFGAP1; ARF1GAP; ADP-ribosylation factor GTPase-activating protein 1; ARF GAP 1; ADP-ribosylation factor 1 GTPase-activating protein; ARF1 GAP; ARF1-directed GTPase-activating protein

**Background**

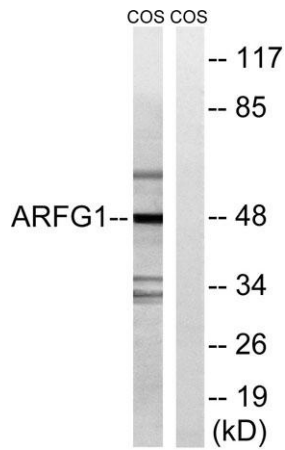
The protein encoded by this gene is a GTPase-activating protein, which associates with the Golgi apparatus and which interacts with ADP-ribosylation factor 1. The encoded protein promotes hydrolysis of ADP-ribosylation factor 1-bound GTP and is required for the dissociation of coat proteins from Golgi-derived membranes and vesicles. Dissociation of the coat proteins is required for the fusion of these vesicles with target compartments. The activity of this protein is stimulated by phosphoinositides and inhibited by phosphatidylcholine. Alternative splicing results in multiple transcript variants. [provided by RefSeq, Jul 2013],



**Immunohistochemical analysis of paraffin-embedded Human breast cancer. Antibody was diluted at 1:100(4° overnight). High-pressure and temperature Tris-EDTA,pH8.0 was used for antigen retrieval. Negative control (right) obtained from antibody was pre-absor**



**Immunofluorescence analysis of MCF7 cells, using ARFGAP1 Antibody. The picture on the right is blocked with the synthesized peptide.**



**Western blot analysis of lysates from COS7 cells, using ARFGAP1 Antibody. The lane on the right is blocked with the synthesized peptide.**