

GPRC5D rabbit pAb**Cat#: orb769604 (Manual)**

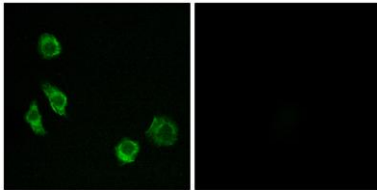
For research use only. Not intended for diagnostic use.

Product Name	GPRC5D rabbit pAb
Host species	Rabbit
Applications	WB;IF;ELISA
Species Cross-Reactivity	Human;Mouse
Recommended dilutions	Western Blot: 1/500 - 1/2000. Immunofluorescence: 1/200 - 1/1000. ELISA: 1/5000. Not yet tested in other applications.
Immunogen	The antiserum was produced against synthesized peptide derived from human GPRC5D. AA range:271-320
Specificity	GPRC5D Polyclonal Antibody detects endogenous levels of GPRC5D protein.
Formulation	Liquid in PBS containing 50% glycerol, 0.5% BSA and 0.02% sodium azide..
Storage	Store at -20°C. Avoid repeated freeze-thaw cycles.
Protein Name	G-protein coupled receptor family C group 5 member D
Gene Name	GPRC5D
Cellular localization	Cell membrane ; Multi-pass membrane protein .
Purification	The antibody was affinity-purified from rabbit antiserum by affinity-chromatography using epitope-specific immunogen.
Clonality	Polyclonal

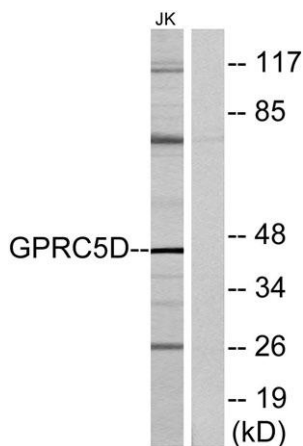
Concentration	1 mg/ml
Observed band	43kD
Human Gene ID	55507
Human Swiss-Prot Number	Q9NZD1
Alternative Names	GPRC5D; G-protein coupled receptor family C group 5 member D

Background

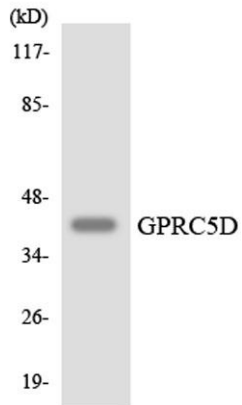
The protein encoded by this gene is a member of the G protein-coupled receptor family; however, the specific function of this gene has not yet been determined. [provided by RefSeq, Jul 2008],



Immunofluorescence analysis of MCF7 cells, using GPRC5D Antibody. The picture on the right is blocked with the synthesized peptide.



Western blot analysis of lysates from Jurkat cells, using GPRC5D Antibody. The lane on the right is blocked with the synthesized peptide.



Western blot analysis of the lysates from HUVEC cells using GPRC5D antibody.