

PP2A-C α (phospho Tyr307) rabbit pAb**Cat#: orb769585 (Manual)**

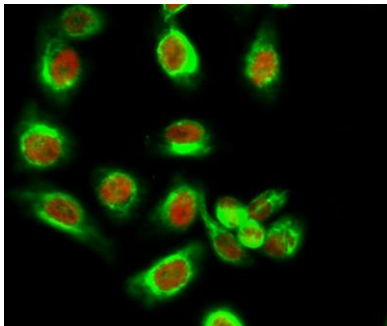
For research use only. Not intended for diagnostic use.

Product Name	PP2A-C α (phospho Tyr307) rabbit pAb
Host species	Rabbit
Applications	WB;IP;IHC;IF;ELISA
Species Cross-Reactivity	Human;Mouse;Rat
Recommended dilutions	Western Blot: 1/500 - 1/2000. Immunohistochemistry: 1/100 - 1/300. Immunofluorescence: 1/200 - 1/1000. ELISA: 1/5000. Not yet tested in other applications.
Immunogen	The antiserum was produced against synthesized peptide derived from human PP2A-alpha around the phosphorylation site of Tyr307. AA range:260-309
Specificity	Phospho-PP2A-C α (Y307) Polyclonal Antibody detects endogenous levels of PP2A-C α protein only when phosphorylated at Y307.
Formulation	Liquid in PBS containing 50% glycerol, 0.5% BSA and 0.02% sodium azide..
Storage	Store at -20°C. Avoid repeated freeze-thaw cycles.
Protein Name	Serine/threonine-protein phosphatase 2A catalytic subunit alpha isoform
Gene Name	PPP2CA
Cellular localization	Cytoplasm . Nucleus . Chromosome, centromere . Cytoplasm, cytoskeleton, spindle pole . In prometaphase cells, but not in anaphase cells, localizes at centromeres (PubMed:16541025). During mitosis, also found at spindle poles (PubMed:16541025). Centromeric localization requires the presence of SGO2 (By similarity). .
Purification	The antibody was affinity-purified from rabbit antiserum by affinity-chromatography using epitope-specific immunogen.

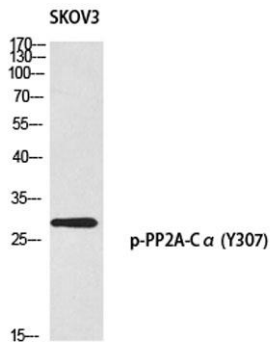
Clonality	Polyclonal
Concentration	1 mg/ml
Observed band	35kD
Human Gene ID	5515
Human Swiss-Prot Number	P67775
Alternative Names	PPP2CA; Serine/threonine-protein phosphatase 2A catalytic subunit alpha isoform; PP2A-alpha; Replication protein C; RP-C

Background

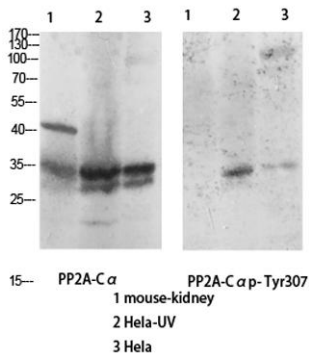
This gene encodes the phosphatase 2A catalytic subunit. Protein phosphatase 2A is one of the four major Ser/Thr phosphatases, and it is implicated in the negative control of cell growth and division. It consists of a common heteromeric core enzyme, which is composed of a catalytic subunit and a constant regulatory subunit, that associates with a variety of regulatory subunits. This gene encodes an alpha isoform of the catalytic subunit. [provided by RefSeq, Jul 2008],



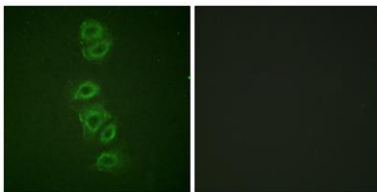
Immunofluorescence analysis of HeLa cell. 1,PP2A-C α (phospho Tyr307) Polyclonal Antibody(red) was diluted at 1:200(4 $^{\circ}$ overnight). HSP70 Monoclonal Antibody(3G10)(green) was diluted at 1:200(4 $^{\circ}$ overnight). 2, Goat Anti Rabbit Alexa Fluor 594 Catalog:RS3611 was diluted at 1:1000(room temperature, 50min). Goat Anti Mouse Alexa Fluor 488 Catalog:RS3208 was diluted at 1:1000(room temperature, 50min).



Western blot analysis of SKOV3 using p-PP2A-Cα (Y307) antibody. Antibody was diluted at 1:1000



Western Blot analysis of various cells using Antibody diluted at 1:1000. Secondary antibody(catalog#:RS0002) was diluted at 1:20000



Immunofluorescence analysis of A549 cells, using PP2A-alpha (Phospho-Tyr307) Antibody. The picture on the right is blocked with the phospho peptide.