

IPP-2 (phospho Ser44) rabbit pAb**Cat#: orb769570 (Manual)**

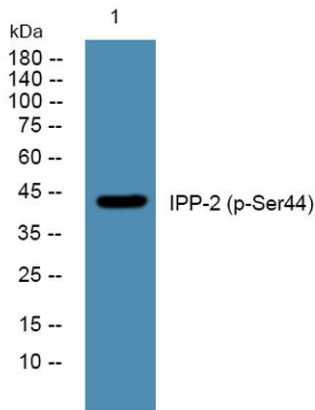
For research use only. Not intended for diagnostic use.

Product Name	IPP-2 (phospho Ser44) rabbit pAb
Host species	Rabbit
Applications	WB;IHC;IF;ELISA
Species Cross-Reactivity	Human;Mouse;Rat
Recommended dilutions	Western Blot: 1/500 - 1/2000. Immunohistochemistry: 1/100 - 1/300. ELISA: 1/40000. Not yet tested in other applications.
Immunogen	Synthesized phospho-peptide around the phosphorylation site of human IPP-2 (phospho Ser44)
Specificity	Phospho-IPP-2 (S44) Polyclonal Antibody detects endogenous levels of IPP-2 protein only when phosphorylated at S44.
Formulation	Liquid in PBS containing 50% glycerol, 0.5% BSA and 0.02% sodium azide..
Storage	Store at -20°C. Avoid repeated freeze-thaw cycles.
Protein Name	Protein phosphatase inhibitor 2
Gene Name	PPP1R2
Cellular localization	protein phosphatase type 1 complex,
Purification	The antibody was affinity-purified from rabbit antiserum by affinity-chromatography using epitope-specific immunogen.
Clonality	Polyclonal

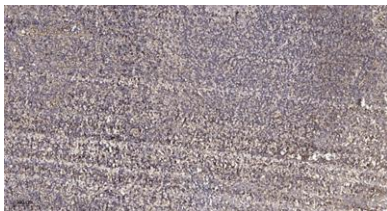
Concentration	1 mg/ml
Observed band	44kD
Human Gene ID	5504
Human Swiss-Prot Number	P41236
Alternative Names	PPP1R2; IPP2; Protein phosphatase inhibitor 2; IPP-2

Background

Protein phosphatase-1 (PP1) is one of the main eukaryotic serine/threonine phosphatases. The protein encoded by this gene binds to the catalytic subunit of PP1, strongly inhibiting its activity. Ten related pseudogenes have been found throughout the human genome. Several splice variants encoding different isoforms have been found for this gene. [provided by RefSeq, Oct 2015],



Western blot analysis of lysates from K562 cells, primary antibody was diluted at 1:1000, 4° over night



Immunohistochemical analysis of paraffin-embedded human tonsil. 1, Antibody was diluted at 1:200(4° overnight). 2, Tris-EDTA,pH9.0 was used for antigen retrieval. 3,Secondary antibody was diluted at 1:200(room temperature, 30min).