

PRPF39 rabbit pAb**Cat#: orb769566 (Manual)**

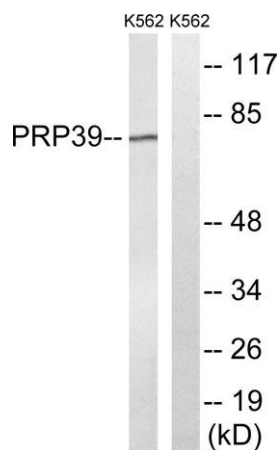
For research use only. Not intended for diagnostic use.

Product Name	PRPF39 rabbit pAb
Host species	Rabbit
Applications	WB;IHC;IF;ELISA
Species Cross-Reactivity	Human;Mouse
Recommended dilutions	Western Blot: 1/500 - 1/2000. Immunohistochemistry: 1/100 - 1/300. ELISA: 1/40000. Not yet tested in other applications.
Immunogen	The antiserum was produced against synthesized peptide derived from human PRPF39. AA range:263-312
Specificity	PRPF39 Polyclonal Antibody detects endogenous levels of PRPF39 protein.
Formulation	Liquid in PBS containing 50% glycerol, 0.5% BSA and 0.02% sodium azide..
Storage	Store at -20°C. Avoid repeated freeze-thaw cycles.
Protein Name	Pre-mRNA-processing factor 39
Gene Name	PRPF39
Cellular localization	Nucleus .
Purification	The antibody was affinity-purified from rabbit antiserum by affinity-chromatography using epitope-specific immunogen.
Clonality	Polyclonal

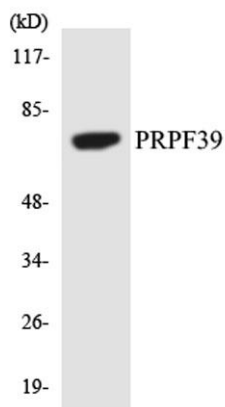
Concentration	1 mg/ml
Observed band	74kD
Human Gene ID	55015
Human Swiss-Prot Number	Q86UA1
Alternative Names	PRPF39; Pre-mRNA-processing factor 39; PRP39 homolog

Background

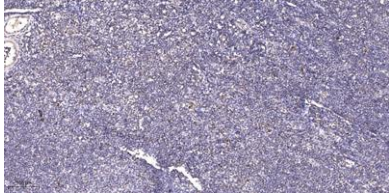
function:Involved in pre-mRNA splicing.,similarity:Belongs to the PRP39 family.,similarity:Contains 7 HAT repeats.,



Western blot analysis of lysates from K562 cells, using PRPF39 Antibody. The lane on the right is blocked with the synthesized peptide.



Western blot analysis of the lysates from COLO205 cells using PRPF39 antibody.



Immunohistochemical analysis of paraffin-embedded human tonsil. 1, Antibody was diluted at 1:200(4° overnight). 2, Tris-EDTA,pH9.0 was used for antigen retrieval. 3,Secondary antibody was diluted at 1:200(room temperature, 45min).