

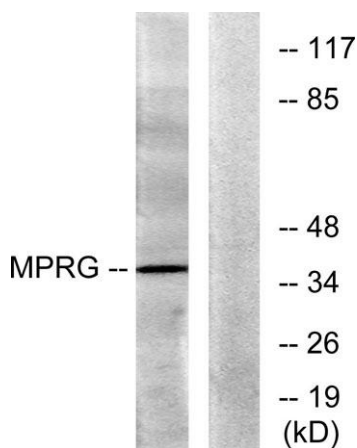
mPR γ rabbit pAb**Cat#: orb769553 (Manual)**

For research use only. Not intended for diagnostic use.

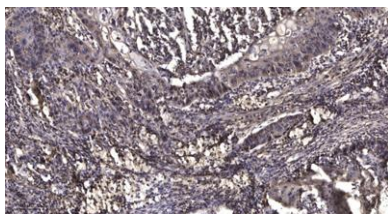
Product Name	mPR γ rabbit pAb
Host species	Rabbit
Applications	WB;ELISA;IHC
Species Cross-Reactivity	Human;Mouse;Rat
Recommended dilutions	WB 1:500-2000;IHC-p 1:50-300; ELISA 2000-20000
Immunogen	The antiserum was produced against synthesized peptide derived from human MPRG. AA range:281-330
Specificity	mPR γ Polyclonal Antibody detects endogenous levels of mPR γ protein.
Formulation	Liquid in PBS containing 50% glycerol, 0.5% BSA and 0.02% sodium azide..
Storage	Store at -20°C. Avoid repeated freeze-thaw cycles.
Protein Name	Membrane progesterin receptor gamma
Gene Name	PAQR5
Cellular localization	Cell membrane ; Multi-pass membrane protein .
Purification	The antibody was affinity-purified from rabbit antiserum by affinity-chromatography using epitope-specific immunogen.
Clonality	Polyclonal

Concentration	1 mg/ml
Observed band	38kD
Human Gene ID	54852
Human Swiss-Prot Number	Q9NXX6
Alternative Names	PAQR5; MPRG; Membrane progestin receptor gamma; mPR gamma; Progestin and adipoQ receptor family member 5; Progestin and adipoQ receptor family member V

Background function: Steroid membrane receptor. Binds progesterone. May be involved in oocyte maturation., similarity: Belongs to the ADIPOR family., tissue specificity: Expressed in the kidney, colon, adrenal and lung.,



Western blot analysis of lysates from HUVEC cells, using MPRG Antibody. The lane on the right is blocked with the synthesized peptide.



Immunohistochemical analysis of paraffin-embedded human Squamous cell carcinoma of lung. 1, Antibody was diluted at 1:200(4° overnight). 2, Tris-EDTA, pH9.0 was used for antigen retrieval. 3, Secondary antibody was diluted at 1:200(room temperature, 45min).