

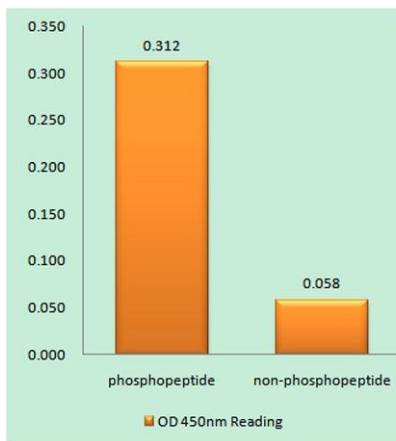
Rrn3 (phospho Ser649) rabbit pAb**Cat#: orb769546 (Manual)**

For research use only. Not intended for diagnostic use.

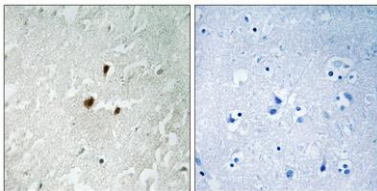
Product Name	Rrn3 (phospho Ser649) rabbit pAb
Host species	Rabbit
Applications	WB;IHC;IF;ELISA
Species Cross-Reactivity	Human;Rat;Mouse;
Recommended dilutions	Western Blot: 1/500 - 1/2000. Immunohistochemistry: 1/100 - 1/300. ELISA: 1/10000. Not yet tested in other applications.
Immunogen	The antiserum was produced against synthesized peptide derived from human TIF-IA around the phosphorylation site of Ser649. AA range:602-651
Specificity	Phospho-Rrn3 (S649) Polyclonal Antibody detects endogenous levels of Rrn3 protein only when phosphorylated at S649.
Formulation	Liquid in PBS containing 50% glycerol, 0.5% BSA and 0.02% sodium azide..
Storage	Store at -20°C. Avoid repeated freeze-thaw cycles.
Protein Name	RNA polymerase I-specific transcription initiation factor RRN3
Gene Name	RRN3
Cellular localization	Nucleus, nucleolus .
Purification	The antibody was affinity-purified from rabbit antiserum by affinity-chromatography using epitope-specific immunogen.
Clonality	Polyclonal

Concentration	1 mg/ml
Observed band	70kD
Human Gene ID	54700
Human Swiss-Prot Number	Q9NYV6
Alternative Names	RRN3; TIFIA; RNA polymerase I-specific transcription initiation factor RRN3; Transcription initiation factor IA; TIF-IA

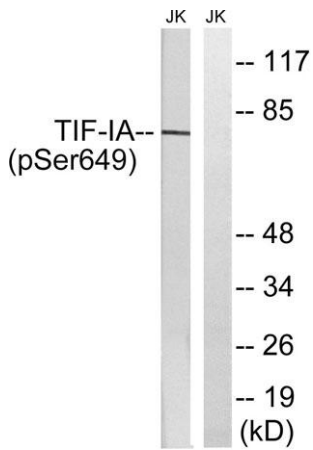
Background function:Required for efficient transcription initiation by RNA polymerase I.,similarity:Belongs to the RRN3 family.,



Enzyme-Linked Immunosorbent Assay (Phospho-ELISA) for Immunogen Phosphopeptide (Phospho-left) and Non-Phosphopeptide (Phospho-right), using TIF-IA (Phospho-Ser649) Antibody



Immunohistochemistry analysis of paraffin-embedded human brain, using TIF-IA (Phospho-Ser649) Antibody. The picture on the right is blocked with the phospho peptide.



Western blot analysis of lysates from Jurkat cells treated with starved 24h, using TIF-IA (Phospho-Ser649) Antibody. The lane on the right is blocked with the phospho peptide.