

TRAP220 (phospho Thr1457) rabbit pAb**Cat#: orb769545 (Manual)**

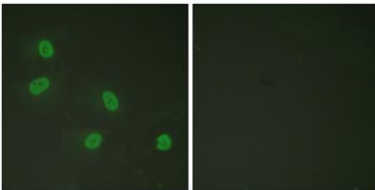
For research use only. Not intended for diagnostic use.

Product Name	TRAP220 (phospho Thr1457) rabbit pAb
Host species	Rabbit
Applications	WB;IHC;IF;ELISA
Species Cross-Reactivity	Human;Mouse;Monkey
Recommended dilutions	Western Blot: 1/500 - 1/2000. Immunohistochemistry: 1/100 - 1/300. Immunofluorescence: 1/200 - 1/1000. ELISA: 1/5000. Not yet tested in other applications.
Immunogen	The antiserum was produced against synthesized peptide derived from human PPAR-BP around the phosphorylation site of Thr1457. AA range:1423-1472
Specificity	Phospho-TRAP220 (T1457) Polyclonal Antibody detects endogenous levels of TRAP220 protein only when phosphorylated at T1457.
Formulation	Liquid in PBS containing 50% glycerol, 0.5% BSA and 0.02% sodium azide..
Storage	Store at -20°C. Avoid repeated freeze-thaw cycles.
Protein Name	Mediator of RNA polymerase II transcription subunit 1
Gene Name	MED1
Cellular localization	Nucleus . A subset of the protein may enter the nucleolus subsequent to phosphorylation by MAPK1 or MAPK3.
Purification	The antibody was affinity-purified from rabbit antiserum by affinity-chromatography using epitope-specific immunogen.
Clonality	Polyclonal

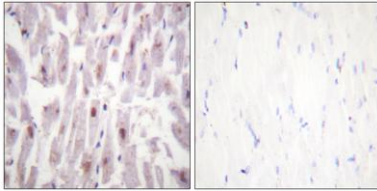
Concentration	1 mg/ml
Observed band	168kD
Human Gene ID	5469
Human Swiss-Prot Number	Q15648
Alternative Names	MED1; ARC205; CRSP1; CRSP200; DRIP205; DRIP230; PBP; PPARBP; PPARGBP; RB18A; TRAP220; TRIP2; Mediator of RNA polymerase II transcription subunit 1; Activator-recruited cofactor 205 kDa component; ARC205; Mediator complex subunit 1; Peroxiso

Background

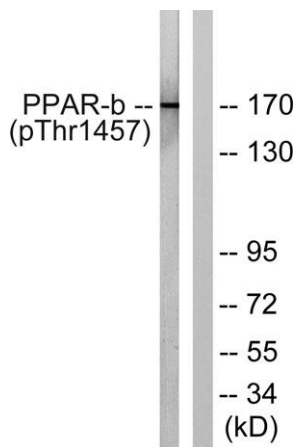
The activation of gene transcription is a multistep process that is triggered by factors that recognize transcriptional enhancer sites in DNA. These factors work with co-activators to direct transcriptional initiation by the RNA polymerase II apparatus. The protein encoded by this gene is a subunit of the CRSP (cofactor required for SP1 activation) complex, which, along with TFIID, is required for efficient activation by SP1. This protein is also a component of other multisubunit complexes e.g. thyroid hormone receptor- (TR-) associated proteins which interact with TR and facilitate TR function on DNA templates in conjunction with initiation factors and cofactors. It also regulates p53-dependent apoptosis and it is essential for adipogenesis. This protein is known to have the ability to self-oligomerize. [provided by RefSeq, Jul 2008],



Immunofluorescence analysis of HeLa cells, using PPAR-BP (Phospho-Thr1457) Antibody. The picture on the right is blocked with the phospho peptide.



Immunohistochemistry analysis of paraffin-embedded human heart, using PPAR-BP (Phospho-Thr1457) Antibody. The picture on the right is blocked with the phospho peptide.



Western blot analysis of lysates from HUVEC cells treated with Serum 20% 30', using PPAR-BP (Phospho-Thr1457) Antibody. The lane on the right is blocked with the phospho peptide.