

PLB (phospho Ser16/T17) rabbit pAb**Cat#: orb769497 (Manual)**

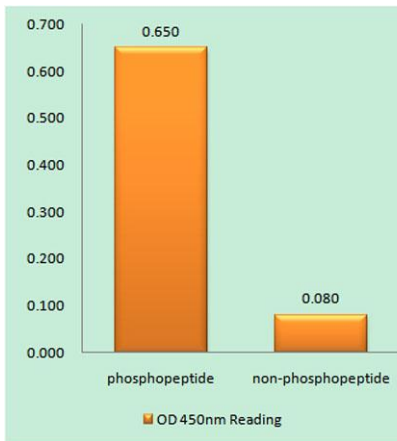
For research use only. Not intended for diagnostic use.

Product Name	PLB (phospho Ser16/T17) rabbit pAb
Host species	Rabbit
Applications	WB;IHC
Species Cross-Reactivity	Human;Mouse;Rat
Recommended dilutions	WB 1:500-2000;IHC-p 1:50-300
Immunogen	The antiserum was produced against synthesized peptide derived from human PLB around the phosphorylation site of Ser16 and Thr17. AA range:1-50
Specificity	Phospho-PLB (S16/T17) Polyclonal Antibody detects endogenous levels of PLB protein only when phosphorylated at S16/T17.
Formulation	Liquid in PBS containing 50% glycerol, 0.5% BSA and 0.02% sodium azide..
Storage	Store at -20°C. Avoid repeated freeze-thaw cycles.
Protein Name	Cardiac phospholamban
Gene Name	PLN
Cellular localization	Endoplasmic reticulum membrane ; Single-pass membrane protein . Sarcoplasmic reticulum membrane ; Single-pass membrane protein . Mitochondrion membrane ; Single-pass membrane protein . Membrane ; Single-pass membrane protein . Colocalizes with HAX1 at the endoplasmic reticulum (PubMed:17241641). Colocalizes with DMPK at the sarcoplasmic reticulum (PubMed:15598648)..

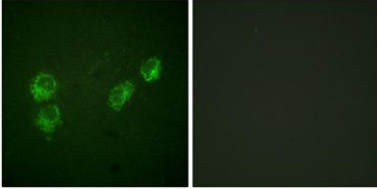
Purification	The antibody was affinity-purified from rabbit antiserum by affinity-chromatography using epitope-specific immunogen.
Clonality	Polyclonal
Concentration	1 mg/ml
Observed band	
Human Gene ID	5350
Human Swiss-Prot Number	P26678
Alternative Names	PLN; PLB; Cardiac phospholamban; PLB

Background

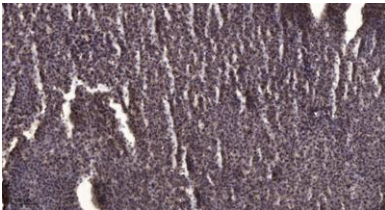
The protein encoded by this gene is found as a pentamer and is a major substrate for the cAMP-dependent protein kinase in cardiac muscle. The encoded protein is an inhibitor of cardiac muscle sarcoplasmic reticulum Ca(2+)-ATPase in the unphosphorylated state, but inhibition is relieved upon phosphorylation of the protein. The subsequent activation of the Ca(2+) pump leads to enhanced muscle relaxation rates, thereby contributing to the inotropic response elicited in heart by beta-agonists. The encoded protein is a key regulator of cardiac diastolic function. Mutations in this gene are a cause of inherited human dilated cardiomyopathy with refractory congestive heart failure, and also familial hypertrophic cardiomyopathy. [provided by RefSeq, Apr 2016],



Enzyme-Linked Immunosorbent Assay (Phospho-ELISA) for Immunogen Phosphopeptide (Phospho-left) and Non-Phosphopeptide (Phospho-right), using PLB (Phospho-Ser16+Thr17) Antibody



Immunofluorescence analysis of HUVEC cells, using PLB (Phospho-Ser16+Thr17) Antibody. The picture on the right is blocked with the phosphopeptide.



Immunohistochemical analysis of paraffin-embedded human liver cancer. 1, Antibody was diluted at 1:200(4° overnight). 2, Tris-EDTA,pH9.0 was used for antigen retrieval. 3,Secondary antibody was diluted at 1:200(room temperature, 45min).