

14-3-3 θ/τ (phospho Ser232) rabbit pAb**Cat#: orb769496 (Manual)**

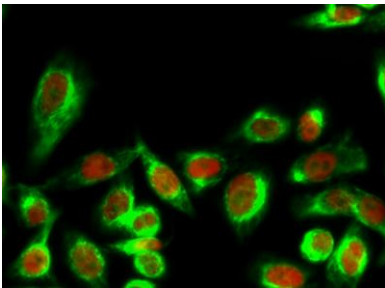
For research use only. Not intended for diagnostic use.

Product Name	14-3-3 θ/τ (phospho Ser232) rabbit pAb
Host species	Rabbit
Applications	WB;IHC;IF;ELISA
Species Cross-Reactivity	Human;Mouse;Rat
Recommended dilutions	Western Blot: 1/500 - 1/2000. Immunohistochemistry: 1/100 - 1/300. Immunofluorescence: 1/200 - 1/1000. ELISA: 1/5000. Not yet tested in other applications.
Immunogen	The antiserum was produced against synthesized peptide derived from human 14-3-3 θ/τ around the phosphorylation site of Ser232. AA range:196-245
Specificity	Phospho-14-3-3 θ/τ (S232) Polyclonal Antibody detects endogenous levels of 14-3-3 θ/τ protein only when phosphorylated at S232.
Formulation	Liquid in PBS containing 50% glycerol, 0.5% BSA and 0.02% sodium azide..
Storage	Store at -20°C. Avoid repeated freeze-thaw cycles.
Protein Name	14-3-3 protein theta
Gene Name	YWHAQ
Cellular localization	Cytoplasm. In neurons, axonally transported to the nerve terminals.
Purification	The antibody was affinity-purified from rabbit antiserum by affinity-chromatography using epitope-specific immunogen.
Clonality	Polyclonal

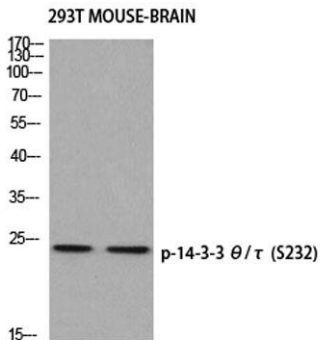
Concentration	1 mg/ml
Observed band	28kD
Human Gene ID	5350
Human Swiss-Prot Number	P27348
Alternative Names	YWHAQ; 14-3-3 protein theta; 14-3-3 protein T-cell; 14-3-3 protein tau; Protein HS1

Background

This gene product belongs to the 14-3-3 family of proteins which mediate signal transduction by binding to phosphoserine-containing proteins. This highly conserved protein family is found in both plants and mammals, and this protein is 99% identical to the mouse and rat orthologs. This gene is upregulated in patients with amyotrophic lateral sclerosis. It contains in its 5' UTR a 6 bp tandem repeat sequence which is polymorphic, however, there is no correlation between the repeat number and the disease. [provided by RefSeq, Jul 2008],

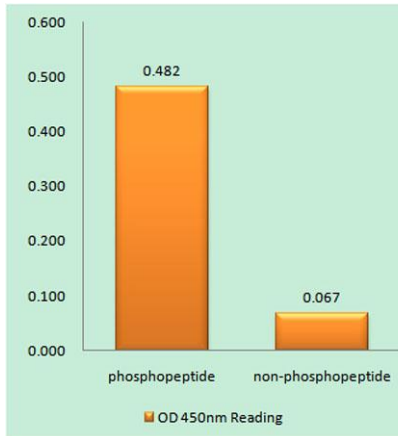


Immunofluorescence analysis of HeLa cell. 1, 14-3-3 θ/τ (phospho Ser232) Polyclonal Antibody (green) was diluted at 1:200 (4° overnight). (red) was diluted at 1:200 (4° overnight). 2, Goat Anti Rabbit Alexa Fluor 488 Catalog:RS3211 was diluted at 1:1000 (room temperature, 50min). Goat Anti Mouse Alexa Fluor 594 Catalog:RS3608 was diluted at 1:1000 (room temperature, 50min).

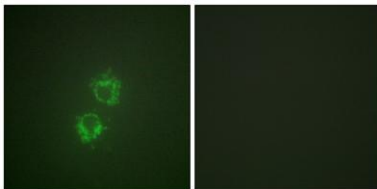


Western blot analysis of 293T MOUSE-BRAIN using p-14-3-3 θ/τ (S232) antibody. Antibody was diluted at 1:500

Explore. Bioreagents.



Enzyme-Linked Immunosorbent Assay (Phospho-ELISA) for Immunogen Phosphopeptide (Phospho-left) and Non-Phosphopeptide (Phospho-right), using 14-3-3 thet/tau (Phospho-Ser232) Antibody



Immunofluorescence analysis of HeLa cells, using 14-3-3 thet/tau (Phospho-Ser232) Antibody. The picture on the right is blocked with the phospho peptide.