

**PC-PLD2 (phospho Tyr169) rabbit pAb****Cat#: orb769490 (Manual)**

For research use only. Not intended for diagnostic use.

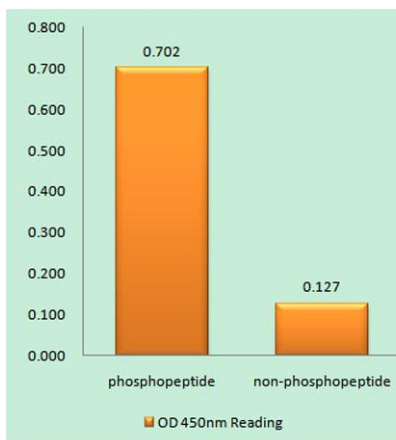
<b>Product Name</b>	PC-PLD2 (phospho Tyr169) rabbit pAb
<b>Host species</b>	Rabbit
<b>Applications</b>	WB;IHC;IF;ELISA
<b>Species Cross-Reactivity</b>	Human;Mouse;Rat
<b>Recommended dilutions</b>	Western Blot: 1/500 - 1/2000. Immunohistochemistry: 1/100 - 1/300. ELISA: 1/10000. Not yet tested in other applications.
<b>Immunogen</b>	The antiserum was produced against synthesized peptide derived from human PLD2 around the phosphorylation site of Tyr169. AA range:136-185
<b>Specificity</b>	Phospho-PC-PLD2 (Y169) Polyclonal Antibody detects endogenous levels of PC-PLD2 protein only when phosphorylated at Y169.
<b>Formulation</b>	Liquid in PBS containing 50% glycerol, 0.5% BSA and 0.02% sodium azide..
<b>Storage</b>	Store at -20°C. Avoid repeated freeze-thaw cycles.
<b>Protein Name</b>	Phospholipase D2
<b>Gene Name</b>	PLD2
<b>Cellular localization</b>	Cell membrane ; Lipid-anchor .
<b>Purification</b>	The antibody was affinity-purified from rabbit antiserum by affinity-chromatography using epitope-specific immunogen.
<b>Clonality</b>	Polyclonal

Explore. Bioreagents.

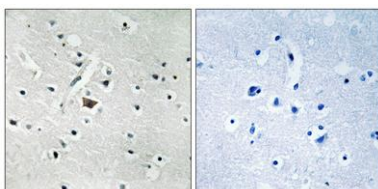
<b>Concentration</b>	1 mg/ml
<b>Observed band</b>	95kD
<b>Human Gene ID</b>	5338
<b>Human Swiss-Prot Number</b>	O14939
<b>Alternative Names</b>	PLD2; Phospholipase D2; PLD 2; hPLD2; Choline phosphatase 2; PLD1C; Phosphatidylcholine-hydrolyzing phospholipase D2

### Background

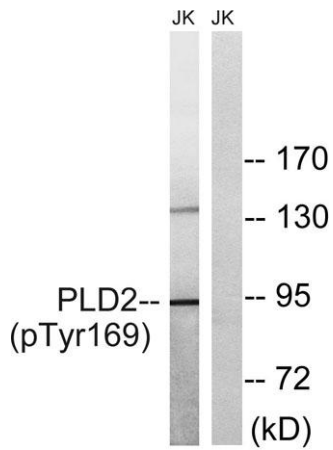
The protein encoded by this gene catalyzes the hydrolysis of phosphatidylcholine to phosphatidic acid and choline. The activity of the encoded enzyme is enhanced by phosphatidylinositol 4,5-bisphosphate and ADP-ribosylation factor-1. This protein localizes to the peripheral membrane and may be involved in cytoskeletal organization, cell cycle control, transcriptional regulation, and/or regulated secretion. Two transcript variants encoding different isoforms have been found for this gene.[provided by RefSeq, Jul 2011],



**Enzyme-Linked Immunosorbent Assay (Phospho-ELISA) for Immunogen Phosphopeptide (Phospho-left) and Non-Phosphopeptide (Phospho-right), using PLD2 (Phospho-Tyr169) Antibody**



**Immunohistochemistry analysis of paraffin-embedded human brain, using PLD2 (Phospho-Tyr169) Antibody. The picture on the right is blocked with the phosphopeptide.**



Western blot analysis of lysates from Jurkat cells treated with TNF 20ng/ml 30', using PLD2 (Phospho-Tyr169) Antibody. The lane on the right is blocked with the phospho peptide.