

PC-PLD1 (phospho Thr147) rabbit pAb**Cat#: orb769486 (Manual)**

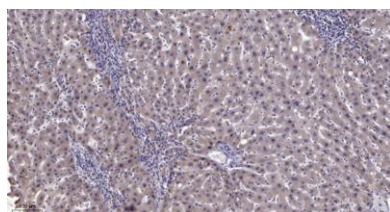
For research use only. Not intended for diagnostic use.

Product Name	PC-PLD1 (phospho Thr147) rabbit pAb
Host species	Rabbit
Applications	WB;ELISA;IHC
Species Cross-Reactivity	Human;Mouse;Rat
Recommended dilutions	WB 1:500-2000;IHC-p 1:50-300; ELISA 2000-20000
Immunogen	Synthesized phospho-peptide around the phosphorylation site of human PC-PLD1 (phospho Thr147)
Specificity	Phospho-PC-PLD1 (T147) Polyclonal Antibody detects endogenous levels of PC-PLD1 protein only when phosphorylated at T147.
Formulation	Liquid in PBS containing 50% glycerol, 0.5% BSA and 0.02% sodium azide..
Storage	Store at -20°C. Avoid repeated freeze-thaw cycles.
Protein Name	Phospholipase D1
Gene Name	PLD1
Cellular localization	Cytoplasm, perinuclear region . Endoplasmic reticulum membrane ; Lipid-anchor ; Cytoplasmic side . Golgi apparatus membrane ; Lipid-anchor ; Cytoplasmic side . Late endosome membrane ; Lipid-anchor ; Cytoplasmic side .
Purification	The antibody was affinity-purified from rabbit antiserum by affinity-chromatography using epitope-specific immunogen.

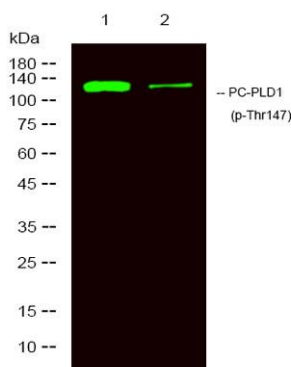
Clonality	Polyclonal
Concentration	1 mg/ml
Observed band	120kD
Human Gene ID	5337
Human Swiss-Prot Number	Q13393
Alternative Names	PLD1; Phospholipase D1; PLD 1; hPLD1; Choline phosphatase 1; Phosphatidylcholine-hydrolyzing phospholipase D1

Background

This gene encodes a phosphatidylcholine-specific phospholipase which catalyzes the hydrolysis of phosphatidylcholine in order to yield phosphatidic acid and choline. The enzyme may play a role in signal transduction and subcellular trafficking. Alternative splicing results in multiple transcript variants with both catalytic and regulatory properties. [provided by RefSeq, Sep 2011],



Immunohistochemical analysis of paraffin-embedded human liver cancer. 1, Antibody was diluted at 1:200(4° overnight). 2, Tris-EDTA,pH9.0 was used for antigen retrieval. 3,Secondary antibody was diluted at 1:200(room temperature, 45min).



Western Blot analysis of 1 HeLa, 2 treated with LPS 100ng/mL 20min, using primary antibody at 1:1000 dilution. Secondary antibody(catalog#:RS23920) was diluted at 1:10000



Explore. Bioreagents.

www.biorbyt.com