

N-Shc rabbit pAb**Cat#: orb769482 (Manual)**

For research use only. Not intended for diagnostic use.

Product Name	N-Shc rabbit pAb
Host species	Rabbit
Applications	IHC;IF;ELISA
Species Cross-Reactivity	Human;Mouse;Rat
Recommended dilutions	Immunohistochemistry: 1/100 - 1/300. ELISA: 1/10000. Not yet tested in other applications.
Immunogen	The antiserum was produced against synthesized peptide derived from human SHC3. AA range:291-340
Specificity	N-Shc Polyclonal Antibody detects endogenous levels of N-Shc protein.
Formulation	Liquid in PBS containing 50% glycerol, 0.5% BSA and 0.02% sodium azide..
Storage	Store at -20°C. Avoid repeated freeze-thaw cycles.
Protein Name	SHC-transforming protein 3
Gene Name	SHC3
Cellular localization	cytosol,plasma membrane,
Purification	The antibody was affinity-purified from rabbit antiserum by affinity-chromatography using epitope-specific immunogen.
Clonality	Polyclonal

Concentration 1 mg/ml

Observed band 48kD

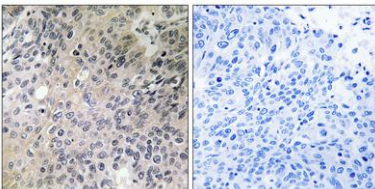
Human Gene ID 53358

Human Swiss-Prot Number Q92529

Alternative Names SHC3; NSHC; SHCC; SHC-transforming protein 3; Neuronal Shc; N-Shc; Protein Rai; SHC-transforming protein C; Src homology 2 domain-containing-transforming protein C3; SH2 domain protein C3

Background

function: Signaling adapter that couples activated growth factor receptors to signaling pathway in neurons. Involved in the signal transduction pathways of neurotrophin-activated Trk receptors in cortical neurons. PTM: Tyrosine phosphorylated. similarity: Contains 1 PID domain. similarity: Contains 1 SH2 domain. subunit: Interacts with the Trk receptors in a phosphotyrosine-dependent manner. Once activated, binds to GRB2. Interacts with activated EGF receptors. tissue specificity: Mainly expressed in brain. Hardly detectable in other tissues, except in pancreas. Highly expressed in the cerebral cortex, frontal and temporal lobes, occipital pole, hippocampus, caudate nucleus and amygdala. Expressed at low level in the cerebellum, medulla and spinal cord.



Immunohistochemistry analysis of paraffin-embedded human lung carcinoma tissue, using SHC3 Antibody. The picture on the right is blocked with the synthesized peptide.