

PR (phospho Ser400) rabbit pAb**Cat#: orb769455 (Manual)**

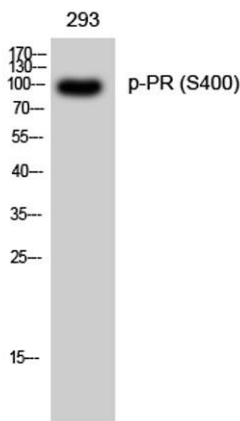
For research use only. Not intended for diagnostic use.

Product Name	PR (phospho Ser400) rabbit pAb
Host species	Rabbit
Applications	WB;IHC
Species Cross-Reactivity	Human;Rat;Mouse;
Recommended dilutions	WB 1:500-2000;IHC-p 1:50-300
Immunogen	The antiserum was produced against synthesized peptide derived from human Progesterone Receptor around the phosphorylation site of Ser400. AA range:371-420
Specificity	Phospho-PR (S400) Polyclonal Antibody detects endogenous levels of PR protein only when phosphorylated at S400.
Formulation	Liquid in PBS containing 50% glycerol, 0.5% BSA and 0.02% sodium azide..
Storage	Store at -20°C. Avoid repeated freeze-thaw cycles.
Protein Name	Progesterone receptor
Gene Name	PGR
Cellular localization	Nucleus. Cytoplasm. Nucleoplasmic shuttling is both hormone- and cell cycle-dependent. On hormone stimulation, retained in the cytoplasm in the G(1) and G(2)/M phases.; [Isoform A]: Nucleus. Cytoplasm. Mainly nuclear.; [Isoform 4]: Mitochondrion outer membrane .
Purification	The antibody was affinity-purified from rabbit antiserum by affinity-chromatography using epitope-specific immunogen.

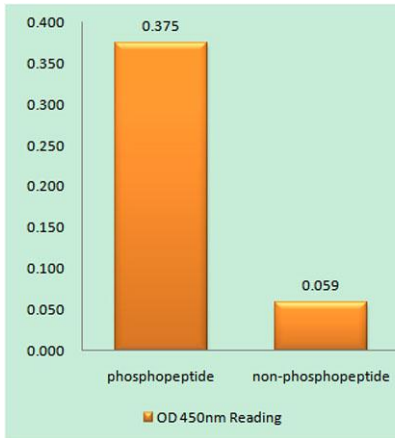
Clonality	Polyclonal
Concentration	1 mg/ml
Observed band	99kD
Human Gene ID	5241
Human Swiss-Prot Number	P06401
Alternative Names	PGR; NR3C3; Progesterone receptor; PR; Nuclear receptor subfamily 3 group C member 3

Background

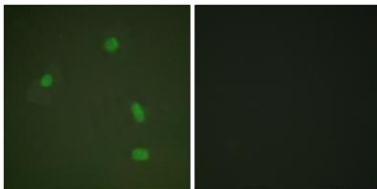
This gene encodes a member of the steroid receptor superfamily. The encoded protein mediates the physiological effects of progesterone, which plays a central role in reproductive events associated with the establishment and maintenance of pregnancy. This gene uses two distinct promoters and translation start sites in the first exon to produce several transcript variants, both protein coding and non-protein coding. Two of the isoforms (A and B) are identical except for an additional 165 amino acids found in the N-terminus of isoform B and mediate their own response genes and physiologic effects with little overlap. [provided by RefSeq, Sep 2015],



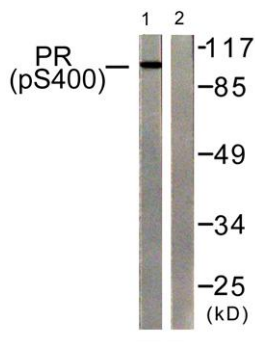
Western Blot analysis of 293 cells using Phospho-PR (S400) Polyclonal Antibody



Enzyme-Linked Immunosorbent Assay (Phospho-ELISA) for Immunogen Phosphopeptide (Phospho-left) and Non-Phosphopeptide (Phospho-right), using Progesterone Receptor (Phospho-Ser400) Antibody



Immunofluorescence analysis of A549 cells, using Progesterone Receptor (Phospho-Ser400) Antibody. The picture on the right is blocked with the phospho peptide.



Western blot analysis of lysates from 293 cells treated with heat shock, using Progesterone Receptor (Phospho-Ser400) Antibody. The lane on the right is blocked with the phospho peptide.