

**Pepsin A rabbit pAb****Cat#: orb769451 (Manual)**

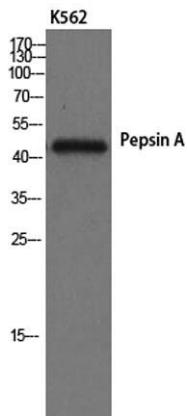
For research use only. Not intended for diagnostic use.

<b>Product Name</b>	Pepsin A rabbit pAb
<b>Host species</b>	Rabbit
<b>Applications</b>	WB;IHC;IF;ELISA
<b>Species Cross-Reactivity</b>	Human;Rat;Mouse;
<b>Recommended dilutions</b>	Western Blot: 1/500 - 1/2000. Immunohistochemistry: 1/100 - 1/300. ELISA: 1/10000. Not yet tested in other applications.
<b>Immunogen</b>	The antiserum was produced against synthesized peptide derived from human Pepsin A. AA range:258-307
<b>Specificity</b>	Pepsin A Polyclonal Antibody detects endogenous levels of Pepsin A protein.
<b>Formulation</b>	Liquid in PBS containing 50% glycerol, 0.5% BSA and 0.02% sodium azide..
<b>Storage</b>	Store at -20°C. Avoid repeated freeze-thaw cycles.
<b>Protein Name</b>	Pepsin A
<b>Gene Name</b>	PGA3/PGA4/PGA5
<b>Cellular localization</b>	extracellular exosome,multivesicular body lumen,
<b>Purification</b>	The antibody was affinity-purified from rabbit antiserum by affinity-chromatography using epitope-specific immunogen.
<b>Clonality</b>	Polyclonal

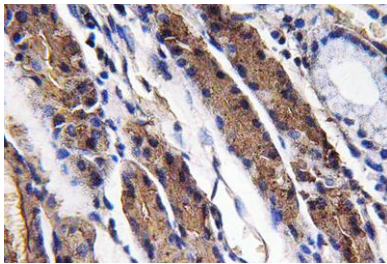
<b>Concentration</b>	1 mg/ml
<b>Observed band</b>	42kD
<b>Human Gene ID</b>	5222/643847
<b>Human Swiss-Prot Number</b>	P00790
<b>Alternative Names</b>	Pepsin A; PGA3; PGA4; PGA5

**Background**

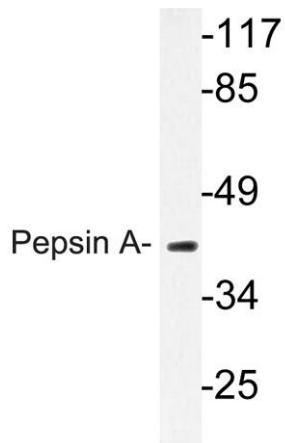
This gene encodes a protein precursor of the digestive enzyme pepsin, a member of the peptidase A1 family of endopeptidases. The encoded precursor is secreted by gastric chief cells and undergoes autocatalytic cleavage in acidic conditions to form the active enzyme, which functions in the digestion of dietary proteins. This gene is found in a cluster of related genes on chromosome 11, each of which encodes one of multiple pepsinogens. Pepsinogen levels in serum may serve as a biomarker for atrophic gastritis and gastric cancer. [provided by RefSeq, Jul 2015],



**Western Blot analysis of K562 cells using Pepsin A Polyclonal Antibody**



**Immunohistochemistry analysis of Pepsin A antibody in paraffin-embedded human lung carcinoma tissue.**



Western blot analysis of lysate from K562 cells, using Pepsin A antibody.