

**PAK $\beta$  rabbit pAb****Cat#: orb769351 (Manual)**

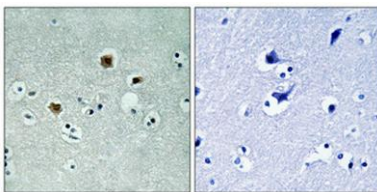
For research use only. Not intended for diagnostic use.

<b>Product Name</b>	PAK $\beta$ rabbit pAb
<b>Host species</b>	Rabbit
<b>Applications</b>	WB;IHC;IF;ELISA
<b>Species Cross-Reactivity</b>	Human;Mouse;Rat
<b>Recommended dilutions</b>	Western Blot: 1/500 - 1/2000. Immunohistochemistry: 1/100 - 1/300. ELISA: 1/40000. Not yet tested in other applications.
<b>Immunogen</b>	The antiserum was produced against synthesized peptide derived from human PAK3. AA range:121-170
<b>Specificity</b>	PAK $\beta$ Polyclonal Antibody detects endogenous levels of PAK $\beta$ protein.
<b>Formulation</b>	Liquid in PBS containing 50% glycerol, 0.5% BSA and 0.02% sodium azide..
<b>Storage</b>	Store at -20°C. Avoid repeated freeze-thaw cycles.
<b>Protein Name</b>	Serine/threonine-protein kinase PAK 3
<b>Gene Name</b>	PAK3
<b>Cellular localization</b>	Cytoplasm .
<b>Purification</b>	The antibody was affinity-purified from rabbit antiserum by affinity-chromatography using epitope-specific immunogen.
<b>Clonality</b>	Polyclonal

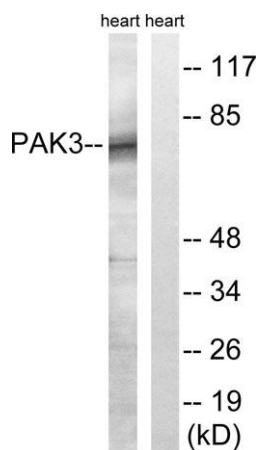
<b>Concentration</b>	1 mg/ml
<b>Observed band</b>	72kD
<b>Human Gene ID</b>	5063
<b>Human Swiss-Prot Number</b>	O75914
<b>Alternative Names</b>	PAK3; OPHN3; Serine/threonine-protein kinase PAK 3; Beta-PAK; Oligophrenin-3; p21-activated kinase 3; PAK-3

**Background**

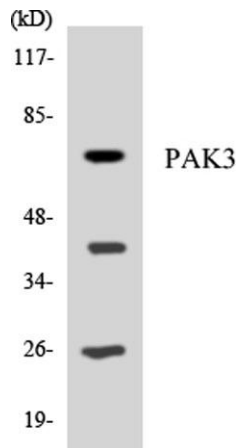
The protein encoded by this gene is a serine-threonine kinase and forms an activated complex with GTP-bound RAS-like (P21), CDC2 and RAC1. This protein may be necessary for dendritic development and for the rapid cytoskeletal reorganization in dendritic spines associated with synaptic plasticity. Defects in this gene are the cause of non-syndromic mental retardation X-linked type 30 (MRX30), also called X-linked mental retardation type 47 (MRX47). Alternatively spliced transcript variants encoding different isoforms have been identified. [provided by RefSeq, Apr 2016],



**Immunohistochemical analysis of paraffin-embedded Human brain. Antibody was diluted at 1:100(4° overnight). High-pressure and temperature Tris-EDTA,pH8.0 was used for antigen retrieval. Negative ctrl (right) obtained from antibody was pre-absorbed by i**



**Western blot analysis of lysates from rat heart cells, using PAK3 Antibody. The lane on the right is blocked with the synthesized peptide.**



Western blot analysis of the lysates from HeLa cells using PAK3 antibody.