

PAK β (phospho Ser154) rabbit pAb**Cat#: orb769350 (Manual)**

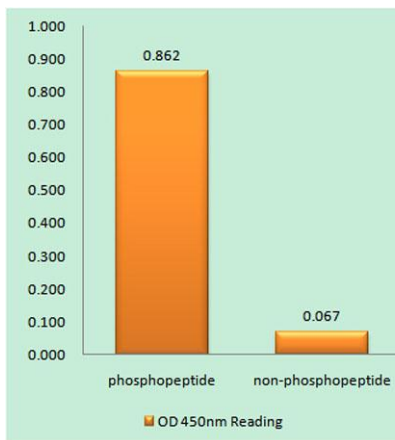
For research use only. Not intended for diagnostic use.

Product Name	PAK β (phospho Ser154) rabbit pAb
Host species	Rabbit
Applications	WB;IHC;IF;ELISA
Species Cross-Reactivity	Human;Mouse;Rat
Recommended dilutions	Western Blot: 1/500 - 1/2000. Immunohistochemistry: 1/100 - 1/300. ELISA: 1/20000. Not yet tested in other applications.
Immunogen	The antiserum was produced against synthesized peptide derived from human PAK3 around the phosphorylation site of Ser154. AA range:121-170
Specificity	Phospho-PAK β (S154) Polyclonal Antibody detects endogenous levels of PAK β protein only when phosphorylated at S154.
Formulation	Liquid in PBS containing 50% glycerol, 0.5% BSA and 0.02% sodium azide..
Storage	Store at -20°C. Avoid repeated freeze-thaw cycles.
Protein Name	Serine/threonine-protein kinase PAK 3
Gene Name	PAK3
Cellular localization	Cytoplasm .
Purification	The antibody was affinity-purified from rabbit antiserum by affinity-chromatography using epitope-specific immunogen.
Clonality	Polyclonal

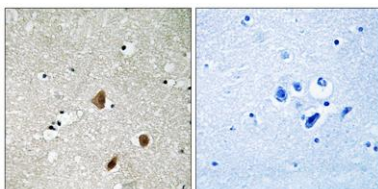
Concentration	1 mg/ml
Observed band	72kD
Human Gene ID	5063
Human Swiss-Prot Number	O75914
Alternative Names	PAK3; OPHN3; Serine/threonine-protein kinase PAK 3; Beta-PAK; Oligophrenin-3; p21-activated kinase 3; PAK-3

Background

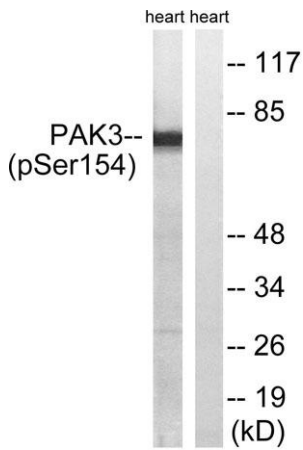
The protein encoded by this gene is a serine-threonine kinase and forms an activated complex with GTP-bound RAS-like (P21), CDC2 and RAC1. This protein may be necessary for dendritic development and for the rapid cytoskeletal reorganization in dendritic spines associated with synaptic plasticity. Defects in this gene are the cause of non-syndromic mental retardation X-linked type 30 (MRX30), also called X-linked mental retardation type 47 (MRX47). Alternatively spliced transcript variants encoding different isoforms have been identified. [provided by RefSeq, Apr 2016],



Enzyme-Linked Immunosorbent Assay (Phospho-ELISA) for Immunogen Phosphopeptide (Phospho-left) and Non-Phosphopeptide (Phospho-right), using PAK3 (Phospho-Ser154) Antibody



Immunohistochemistry analysis of paraffin-embedded human brain, using PAK3 (Phospho-Ser154) Antibody. The picture on the right is blocked with the phosphopeptide.



Western blot analysis of lysates from rat heart, using PAK3 (Phospho-Ser154) Antibody. The lane on the right is blocked with the phospho peptide.