

**DOR-1 (phospho Ser363) rabbit pAb****Cat#: orb769316 (Manual)**

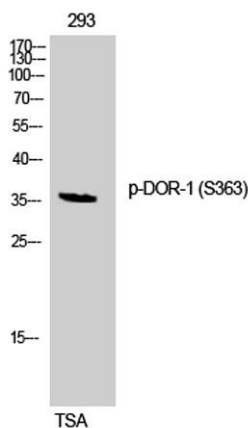
For research use only. Not intended for diagnostic use.

<b>Product Name</b>	DOR-1 (phospho Ser363) rabbit pAb
<b>Host species</b>	Rabbit
<b>Applications</b>	WB;IHC;IF;ELISA
<b>Species Cross-Reactivity</b>	Human;Mouse;Rat
<b>Recommended dilutions</b>	Western Blot: 1/500 - 1/2000. Immunohistochemistry: 1/100 - 1/300. ELISA: 1/5000. Not yet tested in other applications.
<b>Immunogen</b>	The antiserum was produced against synthesized peptide derived from human Opioid Receptor-delta around the phosphorylation site of Ser363. AA range:323-372
<b>Specificity</b>	Phospho-DOR-1 (S363) Polyclonal Antibody detects endogenous levels of DOR-1 protein only when phosphorylated at S363.
<b>Formulation</b>	Liquid in PBS containing 50% glycerol, 0.5% BSA and 0.02% sodium azide..
<b>Storage</b>	Store at -20°C. Avoid repeated freeze-thaw cycles.
<b>Protein Name</b>	Delta-type opioid receptor
<b>Gene Name</b>	OPRD1
<b>Cellular localization</b>	Cell membrane ; Multi-pass membrane protein .
<b>Purification</b>	The antibody was affinity-purified from rabbit antiserum by affinity-chromatography using epitope-specific immunogen.
<b>Clonality</b>	Polyclonal

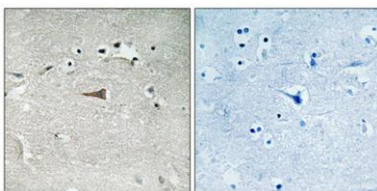
<b>Concentration</b>	1 mg/ml
<b>Observed band</b>	36kD
<b>Human Gene ID</b>	4985
<b>Human Swiss-Prot Number</b>	P41143
<b>Alternative Names</b>	OPRD1; OPRD; Delta-type opioid receptor; D-OR-1; DOR-1

## Background

function: Inhibits neurotransmitter release by reducing calcium ion currents and increasing potassium ion conductance. Highly stereoselective. receptor for enkephalins.,online information: Delta opioid receptor entry,similarity: Belongs to the G-protein coupled receptor 1 family.,subunit: Interacts with GPRASP1.,

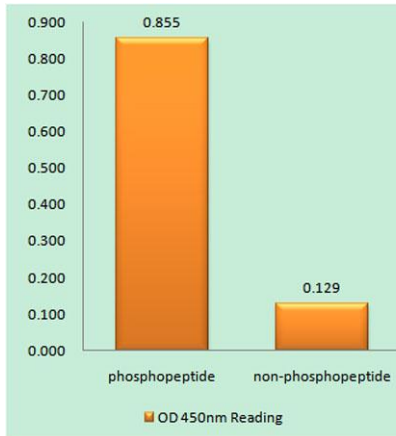


Western Blot analysis of 293 cells using Phospho-DOR-1 (S363) Polyclonal Antibody

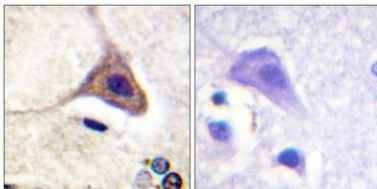


Immunohistochemical analysis of paraffin-embedded Human brain. Antibody was diluted at 1:100(4° overnight). High-pressure and temperature Tris-EDTA,pH8.0 was used for antigen retrieval. Negative ctrl (right) obtained from antibody was pre-absorbed by immunogen peptide.

Explore. Bioreagents.



**Enzyme-Linked Immunosorbent Assay (Phospho-ELISA) for Immunogen Phosphopeptide (Phospho-left) and Non-Phosphopeptide (Phospho-right), using Opioid Receptor-delta (Phospho-Ser363) Antibody**



**Immunohistochemistry analysis of paraffin-embedded human brain, using Opioid Receptor-delta (Phospho-Ser363) Antibody. The picture on the right is blocked with the phospho peptide.**