

NuMA rabbit pAb**Cat#: orb769311 (Manual)**

For research use only. Not intended for diagnostic use.

Product Name	NuMA rabbit pAb
Host species	Rabbit
Applications	WB;IHC;IF;ELISA
Species Cross-Reactivity	Human;Rat;Mouse;
Recommended dilutions	Western Blot: 1/500 - 1/2000. Immunohistochemistry: 1/100 - 1/300. ELISA: 1/5000. Not yet tested in other applications.
Immunogen	The antiserum was produced against synthesized peptide derived from human NUMA1. AA range:334-383
Specificity	NuMA Polyclonal Antibody detects endogenous levels of NuMA protein.
Formulation	Liquid in PBS containing 50% glycerol, 0.5% BSA and 0.02% sodium azide..
Storage	Store at -20°C. Avoid repeated freeze-thaw cycles.
Protein Name	Nuclear mitotic apparatus protein 1
Gene Name	NUMA1
Cellular localization	Nucleus . Nucleus, nucleoplasm . Nucleus matrix . Chromosome . Cytoplasm, cytoskeleton . Cytoplasm, cytoskeleton, microtubule organizing center, centrosome . Cytoplasm, cytoskeleton, spindle pole . Cytoplasm, cell cortex . Cell membrane ; Lipid-anchor ; Cytoplasmic side . Lateral cell membrane . Mitotic cell cycle-dependent shuttling protein that relocalizes from the interphase nucleus to the spindle poles and cell cortex (PubMed:1541636, PubMed:10811826). The localization to the spindle poles is regulated by AAAS (PubMed:26246606). In interphase, resides in the nuclear matrix (PubMed:1541630, PubMed:1541636, PubMed:23921553). In prophase, restricted to the interchromatin or condensed chromosome space (PubMed:10811826). In prometaphase, after nuclear envelope disassembly,

forms aggregates

Purification

The antibody was affinity-purified from rabbit antiserum by affinity-chromatography using epitope-specific immunogen.

Clonality

Polyclonal

Concentration

1 mg/ml

Observed band

240kD

Human Gene ID

4926

Human Swiss-Prot Number

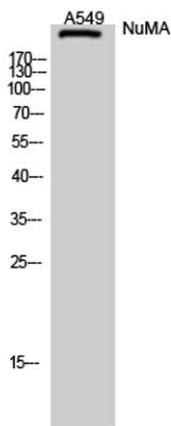
Q14980

Alternative Names

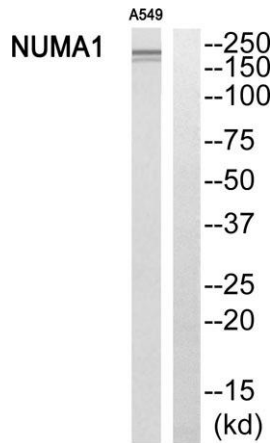
NUMA1; NUMA; Nuclear mitotic apparatus protein 1; NuMA protein; SP-H antigen

Background

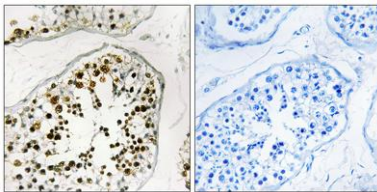
This gene encodes a large protein that forms a structural component of the nuclear matrix. The encoded protein interacts with microtubules and plays a role in the formation and organization of the mitotic spindle during cell division. Chromosomal translocation of this gene with the RARA (retinoic acid receptor, alpha) gene on chromosome 17 have been detected in patients with acute promyelocytic leukemia. Alternative splicing results in multiple transcript variants. [provided by RefSeq, Nov 2013],



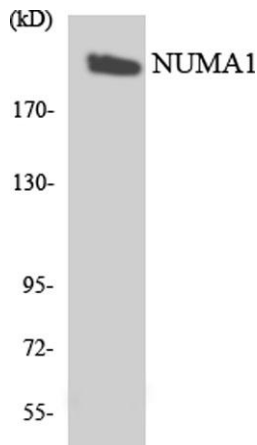
Western Blot analysis of A549 cells using NuMA Polyclonal Antibody diluted at 1:2000



Western blot analysis of NUMA1 Antibody. The lane on the right is blocked with the NUMA1 peptide.



Immunohistochemistry analysis of paraffin-embedded human testis, using NUMA1 Antibody. The lane on the right is blocked with the NUMA1 peptide.



Western blot analysis of the lysates from K562 cells using NUMA1 antibody.