

NTR1 rabbit pAb**Cat#: orb769310 (Manual)**

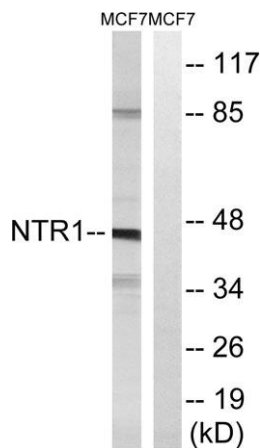
For research use only. Not intended for diagnostic use.

Product Name	NTR1 rabbit pAb
Host species	Rabbit
Applications	WB;IHC;IF;ELISA
Species Cross-Reactivity	Human;Mouse
Recommended dilutions	Western Blot: 1/500 - 1/2000. Immunohistochemistry: 1/100 - 1/300. Immunofluorescence: 1/200 - 1/1000. ELISA: 1/5000. Not yet tested in other applications.
Immunogen	The antiserum was produced against synthesized peptide derived from human NTR1. AA range:181-230
Specificity	NTR1 Polyclonal Antibody detects endogenous levels of NTR1 protein.
Formulation	Liquid in PBS containing 50% glycerol, 0.5% BSA and 0.02% sodium azide..
Storage	Store at -20°C. Avoid repeated freeze-thaw cycles.
Protein Name	Neurotensin receptor type 1
Gene Name	NTSR1
Cellular localization	Cell membrane ; Multi-pass membrane protein . Membrane raft . Palmitoylation is required for localization at CAV1-enriched membrane rafts. .
Purification	The antibody was affinity-purified from rabbit antiserum by affinity-chromatography using epitope-specific immunogen.

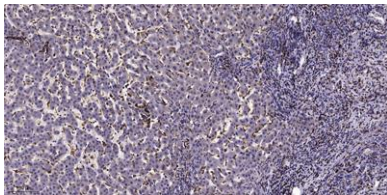
Clonality	Polyclonal
Concentration	1 mg/ml
Observed band	46kD
Human Gene ID	4923
Human Swiss-Prot Number	P30989
Alternative Names	NTSR1; NTRR; Neurotensin receptor type 1; NT-R-1; NTR1; High-affinity levocabastine-insensitive neurotensin receptor; NTRH

Background

Neurotensin receptor 1 belongs to the large superfamily of G-protein coupled receptors. NTSR1 mediates the multiple functions of neurotensin, such as hypotension, hyperglycemia, hypothermia, antinociception, and regulation of intestinal motility and secretion. [provided by RefSeq, Jul 2008],



Western blot analysis of lysates from MCF7 cells, using NTR1 Antibody. The lane on the right is blocked with the synthesized peptide.



Immunohistochemical analysis of paraffin-embedded human liver cancer. 1, Antibody was diluted at 1:200(4° overnight). 2, Tris-EDTA,pH9.0 was used for antigen retrieval. 3,Secondary antibody was diluted at 1:200(room temperature, 45min).