

**CNOT4 rabbit pAb****Cat#: orb769280 (Manual)**

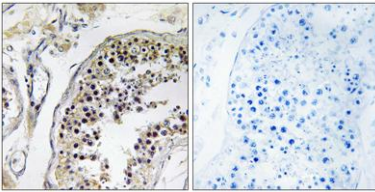
For research use only. Not intended for diagnostic use.

<b>Product Name</b>	CNOT4 rabbit pAb
<b>Host species</b>	Rabbit
<b>Applications</b>	WB;IHC;IF;ELISA
<b>Species Cross-Reactivity</b>	Human;Mouse;Rat
<b>Recommended dilutions</b>	Western Blot: 1/500 - 1/2000. Immunohistochemistry: 1/100 - 1/300. ELISA: 1/20000. Not yet tested in other applications.
<b>Immunogen</b>	The antiserum was produced against synthesized peptide derived from human CNOT4. AA range:61-110
<b>Specificity</b>	CNOT4 Polyclonal Antibody detects endogenous levels of CNOT4 protein.
<b>Formulation</b>	Liquid in PBS containing 50% glycerol, 0.5% BSA and 0.02% sodium azide..
<b>Storage</b>	Store at -20°C. Avoid repeated freeze-thaw cycles.
<b>Protein Name</b>	CCR4-NOT transcription complex subunit 4
<b>Gene Name</b>	CNOT4
<b>Cellular localization</b>	Cytoplasm . Nucleus .
<b>Purification</b>	The antibody was affinity-purified from rabbit antiserum by affinity-chromatography using epitope-specific immunogen.
<b>Clonality</b>	Polyclonal

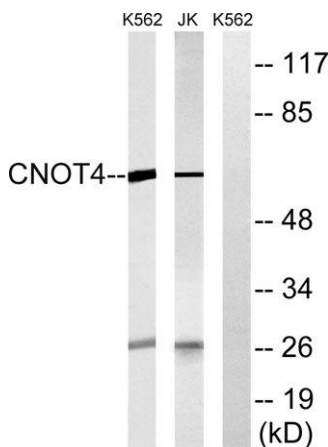
<b>Concentration</b>	1 mg/ml
<b>Observed band</b>	64kD
<b>Human Gene ID</b>	4850
<b>Human Swiss-Prot Number</b>	O95628
<b>Alternative Names</b>	CNOT4; NOT4; CCR4-NOT transcription complex subunit 4; CCR4-associated factor 4; E3 ubiquitin-protein ligase CNOT4; Potential transcriptional repressor NOT4Hp

### Background

CCR4-NOT transcription complex subunit 4(CNOT4) Homo sapiens  
The protein encoded by this gene is a subunit of the CCR4-NOT complex, a global transcriptional regulator. The encoded protein interacts with CNOT1 and has E3 ubiquitin ligase activity. Several transcript variants encoding different isoforms have been found for this gene.[provided by RefSeq, Jul 2010],



**Immunohistochemistry analysis of paraffin-embedded human testis tissue, using CNOT4 Antibody. The picture on the right is blocked with the synthesized peptide.**



**Western blot analysis of lysates from Jurkat and K562 cells, using CNOT4 Antibody. The lane on the right is blocked with the synthesized peptide.**