

**CNOT2 (phospho Ser101) rabbit pAb****Cat#: orb769278 (Manual)**

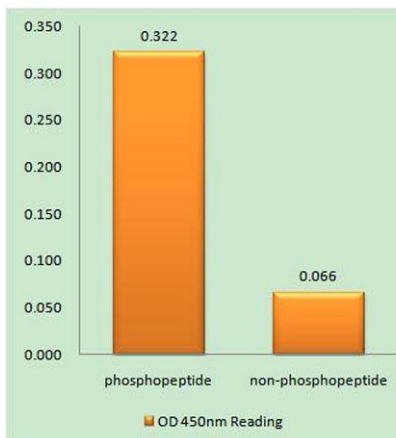
For research use only. Not intended for diagnostic use.

<b>Product Name</b>	CNOT2 (phospho Ser101) rabbit pAb
<b>Host species</b>	Rabbit
<b>Applications</b>	IHC;IF;ELISA
<b>Species Cross-Reactivity</b>	Human;Mouse;Rat
<b>Recommended dilutions</b>	Immunohistochemistry: 1/100 - 1/300. ELISA: 1/10000. Not yet tested in other applications.
<b>Immunogen</b>	The antiserum was produced against synthesized peptide derived from human CNOT2 around the phosphorylation site of Ser101. AA range:67-116
<b>Specificity</b>	Phospho-CNOT2 (S101) Polyclonal Antibody detects endogenous levels of CNOT2 protein only when phosphorylated at S101.
<b>Formulation</b>	Liquid in PBS containing 50% glycerol, 0.5% BSA and 0.02% sodium azide..
<b>Storage</b>	Store at -20°C. Avoid repeated freeze-thaw cycles.
<b>Protein Name</b>	CCR4-NOT transcription complex subunit 2
<b>Gene Name</b>	CNOT2
<b>Cellular localization</b>	Cytoplasm . Nucleus .
<b>Purification</b>	The antibody was affinity-purified from rabbit antiserum by affinity-chromatography using epitope-specific immunogen.
<b>Clonality</b>	Polyclonal

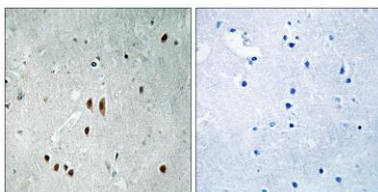
<b>Concentration</b>	1 mg/ml
<b>Observed band</b>	
<b>Human Gene ID</b>	4848
<b>Human Swiss-Prot Number</b>	Q9NZN8
<b>Alternative Names</b>	CNOT2; CDC36; NOT2; HSPC131; MSTP046; CCR4-NOT transcription complex subunit 2; CCR4-associated factor 2

**Background**

CCR4-NOT transcription complex subunit 2(CNOT2) Homo sapiens  
 This gene encodes a subunit of the multi-component CCR4-NOT complex. The CCR4-NOT complex regulates mRNA synthesis and degradation and is also thought to be involved in mRNA splicing, transport and localization. The encoded protein interacts with histone deacetylases and functions as a repressor of polymerase II transcription. Alternatively spliced transcript variants have been observed for this gene. [provided by RefSeq, Dec 2010],



**Enzyme-Linked Immunosorbent Assay (Phospho-ELISA) for Immunogen Phosphopeptide (Phospho-left) and Non-Phosphopeptide (Phospho-right), using CNOT2 (Phospho-Ser101) Antibody**



**Immunohistochemistry analysis of paraffin-embedded human brain, using CNOT2 (Phospho-Ser101) Antibody. The picture on the right is blocked with the phospho peptide.**



Explore. Bioreagents.

[www.biorbyt.com](http://www.biorbyt.com)