

**eNOS (phospho Ser615) rabbit pAb****Cat#: orb769275 (Manual)**

For research use only. Not intended for diagnostic use.

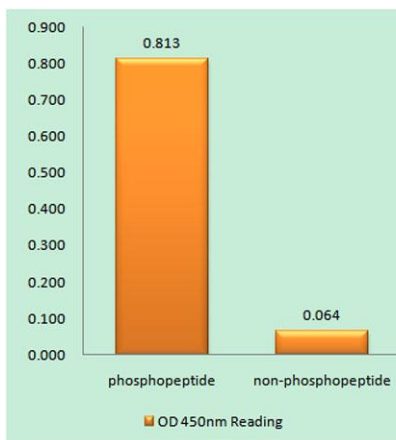
<b>Product Name</b>	eNOS (phospho Ser615) rabbit pAb
<b>Host species</b>	Rabbit
<b>Applications</b>	WB;ELISA
<b>Species Cross-Reactivity</b>	Human;Mouse;Rat
<b>Recommended dilutions</b>	Western Blot: 1/500 - 1/2000. ELISA: 1/40000. Not yet tested in other applications.
<b>Immunogen</b>	The antiserum was produced against synthesized peptide derived from human eNOS around the phosphorylation site of Ser615. AA range:581-630
<b>Specificity</b>	Phospho-NOS3 (S615) Polyclonal Antibody detects endogenous levels of NOS3 protein only when phosphorylated at S615.
<b>Formulation</b>	Liquid in PBS containing 50% glycerol, 0.5% BSA and 0.02% sodium azide..
<b>Storage</b>	Store at -20°C. Avoid repeated freeze-thaw cycles.
<b>Protein Name</b>	Nitric oxide synthase endothelial
<b>Gene Name</b>	NOS3
<b>Cellular localization</b>	Cell membrane. Membrane, caveola. Cytoplasm, cytoskeleton. Golgi apparatus. Specifically associates with actin cytoskeleton in the G2 phase of the cell cycle; which is favored by interaction with NOSIP and results in a reduced enzymatic activity.
<b>Purification</b>	The antibody was affinity-purified from rabbit antiserum by affinity-chromatography using epitope-specific immunogen.

Explore. Bioreagents.

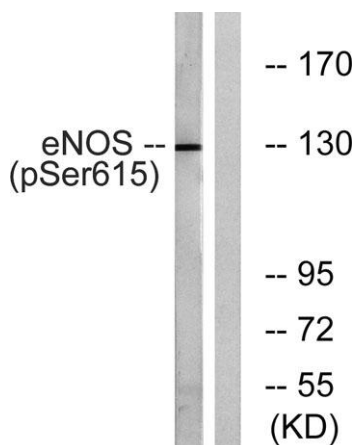
<b>Clonality</b>	Polyclonal
<b>Concentration</b>	1 mg/ml
<b>Observed band</b>	130-140kD
<b>Human Gene ID</b>	4846
<b>Human Swiss-Prot Number</b>	P29474
<b>Alternative Names</b>	NOS3; Nitric oxide synthase; endothelial; Constitutive NOS; cNOS; EC-NOS; Endothelial NOS; eNOS; NOS type III; NOSIII

### Background

Nitric oxide is a reactive free radical which acts as a biologic mediator in several processes, including neurotransmission and antimicrobial and antitumoral activities. Nitric oxide is synthesized from L-arginine by nitric oxide synthases. Variations in this gene are associated with susceptibility to coronary spasm. Multiple transcript variants encoding different isoforms have been found for this gene. [provided by RefSeq, May 2009],



**Enzyme-Linked Immunosorbent Assay (Phospho-ELISA) for Immunogen Phosphopeptide (Phospho-left) and Non-Phosphopeptide (Phospho-right), using eNOS (Phospho-Ser615) Antibody**



**Western blot analysis of lysates from K562 cells treated with EGF 40nM 30', using eNOS (Phospho-Ser615) Antibody. The lane on the right is blocked with the phospho peptide.**



Explore. Bioreagents.

[www.biorbyt.com](http://www.biorbyt.com)