

**NOS2 (phospho Tyr151) rabbit pAb****Cat#: orb769273 (Manual)**

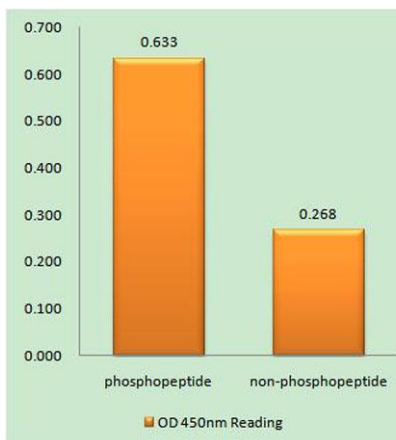
For research use only. Not intended for diagnostic use.

<b>Product Name</b>	NOS2 (phospho Tyr151) rabbit pAb
<b>Host species</b>	Rabbit
<b>Applications</b>	IHC;IF;ELISA
<b>Species Cross-Reactivity</b>	Human;Mouse;Rat
<b>Recommended dilutions</b>	Immunohistochemistry: 1/100 - 1/300. ELISA: 1/10000. Not yet tested in other applications.
<b>Immunogen</b>	The antiserum was produced against synthesized peptide derived from human iNOS around the phosphorylation site of Tyr151. AA range:117-166
<b>Specificity</b>	Phospho-NOS2 (Y151) Polyclonal Antibody detects endogenous levels of NOS2 protein only when phosphorylated at Y151.
<b>Formulation</b>	Liquid in PBS containing 50% glycerol, 0.5% BSA and 0.02% sodium azide..
<b>Storage</b>	Store at -20°C. Avoid repeated freeze-thaw cycles.
<b>Protein Name</b>	Nitric oxide synthase inducible
<b>Gene Name</b>	NOS2, INOS
<b>Cellular localization</b>	Cytoplasm, cytosol . Localizes as discrete foci scattered throughout the cytosol and in the presence of SPSB1 and SPSB4, exhibits a more diffuse cytosolic localization. .
<b>Purification</b>	The antibody was affinity-purified from rabbit antiserum by affinity-chromatography using epitope-specific immunogen.

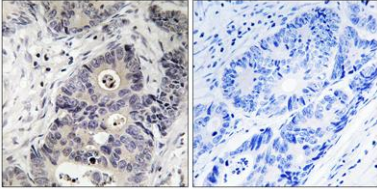
<b>Clonality</b>	Polyclonal
<b>Concentration</b>	1 mg/ml
<b>Observed band</b>	
<b>Human Gene ID</b>	4843
<b>Human Swiss-Prot Number</b>	P35228
<b>Alternative Names</b>	NOS2; NOS2A; Nitric oxide synthase; inducible; Hepatocyte NOS; HEP-NOS; Inducible NO synthase; Inducible NOS; iNOS; NOS type II; Peptidyl-cysteine S-nitrosylase NOS2

## Background

Nitric oxide is a reactive free radical which acts as a biologic mediator in several processes, including neurotransmission and antimicrobial and antitumoral activities. This gene encodes a nitric oxide synthase which is expressed in liver and is inducible by a combination of lipopolysaccharide and certain cytokines. Three related pseudogenes are located within the Smith-Magenis syndrome region on chromosome 17. [provided by RefSeq, Jul 2008],



**Enzyme-Linked Immunosorbent Assay (Phospho-ELISA) for Immunogen Phosphopeptide (Phospho-left) and Non-Phosphopeptide (Phospho-right), using iNOS (Phospho-Tyr151) Antibody**



**Immunohistochemistry analysis of paraffin-embedded human colon carcinoma, using iNOS (Phospho-Tyr151) Antibody. The picture on the right is blocked with the phospho peptide.**