

Nkx-6.1 rabbit pAb**Cat#: orb769269 (Manual)**

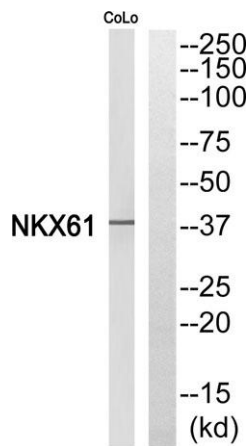
For research use only. Not intended for diagnostic use.

Product Name	Nkx-6.1 rabbit pAb
Host species	Rabbit
Applications	WB;ELISA
Species Cross-Reactivity	Human;Mouse;Rat
Recommended dilutions	Western Blot: 1/500 - 1/2000. ELISA: 1/40000. Not yet tested in other applications.
Immunogen	Synthesized peptide derived from Nkx-6.1 . at AA range: 180-260
Specificity	Nkx-6.1 Polyclonal Antibody detects endogenous levels of Nkx-6.1 protein.
Formulation	Liquid in PBS containing 50% glycerol, 0.5% BSA and 0.02% sodium azide..
Storage	Store at -20°C. Avoid repeated freeze-thaw cycles.
Protein Name	Homeobox protein Nkx-6.1
Gene Name	NKX6-1
Cellular localization	Nucleus .
Purification	The antibody was affinity-purified from rabbit antiserum by affinity-chromatography using epitope-specific immunogen.
Clonality	Polyclonal

Concentration	1 mg/ml
Observed band	
Human Gene ID	4825
Human Swiss-Prot Number	P78426
Alternative Names	NKX6-1; NKX6A; Homeobox protein Nkx-6.1; Homeobox protein NK-6 homolog A

Background

In the pancreas, NKX6.1 is required for the development of beta cells and is a potent bifunctional transcription regulator that binds to AT-rich sequences within the promoter region of target genes Iype et al. (2004) [PubMed 15056733].[supplied by OMIM, Mar 2008],



Western blot analysis of NKX61 Antibody. The lane on the right is blocked with the NKX61 peptide.