

Neuro D (phospho Ser274) rabbit pAb**Cat#: orb769235 (Manual)**

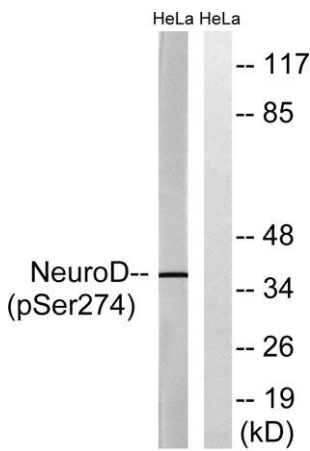
For research use only. Not intended for diagnostic use.

Product Name	Neuro D (phospho Ser274) rabbit pAb
Host species	Rabbit
Applications	WB;IHC
Species Cross-Reactivity	Human;Mouse;Rat
Recommended dilutions	WB 1:500-2000;IHC-p 1:50-300
Immunogen	The antiserum was produced against synthesized peptide derived from human Neuro D around the phosphorylation site of Ser274. AA range:240-289
Specificity	Phospho-Neuro D (S274) Polyclonal Antibody detects endogenous levels of Neuro D protein only when phosphorylated at S274.
Formulation	Liquid in PBS containing 50% glycerol, 0.5% BSA and 0.02% sodium azide..
Storage	Store at -20°C. Avoid repeated freeze-thaw cycles.
Protein Name	Neurogenic differentiation factor 1
Gene Name	NEUROD1
Cellular localization	Cytoplasm . Nucleus . In pancreatic islet cells, shuttles to the nucleus in response to glucose stimulation (By similarity). Colocalizes with NR0B2 in the nucleus. .
Purification	The antibody was affinity-purified from rabbit antiserum by affinity-chromatography using epitope-specific immunogen.

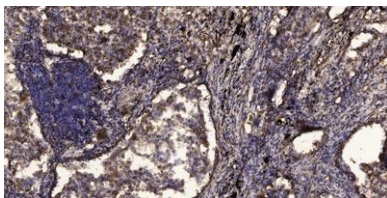
Clonality	Polyclonal
Concentration	1 mg/ml
Observed band	36kD
Human Gene ID	4760
Human Swiss-Prot Number	Q13562
Alternative Names	NEUROD1; BHLHA3; NEUROD; Neurogenic differentiation factor 1; NeuroD; NeuroD1; Class A basic helix-loop-helix protein 3; bHLHa3

Background

This gene encodes a member of the NeuroD family of basic helix-loop-helix (bHLH) transcription factors. The protein forms heterodimers with other bHLH proteins and activates transcription of genes that contain a specific DNA sequence known as the E-box. It regulates expression of the insulin gene, and mutations in this gene result in type II diabetes mellitus. [provided by RefSeq, Jul 2008],



Western blot analysis of lysates from HeLa cells treated with UV 15', using Neuro D (Phospho-Ser274) Antibody. The lane on the right is blocked with the phospho peptide.



Immunohistochemical analysis of paraffin-embedded human Squamous cell carcinoma of lung. 1, Antibody was diluted at 1:200(4° overnight). 2, Tris-EDTA,pH9.0 was used for antigen retrieval. 3,Secondary antibody was diluted at 1:200(room temperature, 45min).



Explore. Bioreagents.

www.biorbyt.com