

Ribosomal Protein L10A rabbit pAb**Cat#: orb769230 (Manual)**

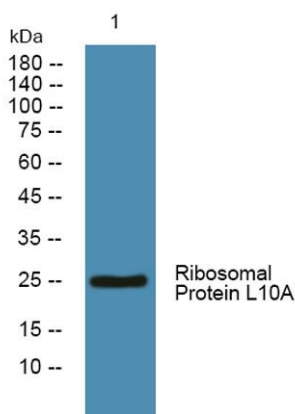
For research use only. Not intended for diagnostic use.

Product Name	Ribosomal Protein L10A rabbit pAb
Host species	Rabbit
Applications	WB;IHC
Species Cross-Reactivity	Human;Mouse;Rat
Recommended dilutions	WB 1:500-2000;IHC-p 1:50-300
Immunogen	Synthesized peptide derived from Ribosomal Protein L10A . at AA range: 30-110
Specificity	Ribosomal Protein L10A Polyclonal Antibody detects endogenous levels of Ribosomal Protein L10A protein.
Formulation	Liquid in PBS containing 50% glycerol, 0.5% BSA and 0.02% sodium azide..
Storage	Store at -20°C. Avoid repeated freeze-thaw cycles.
Protein Name	60S ribosomal protein L10a
Gene Name	RPL10A
Cellular localization	nucleus,nucleolus,cytoplasm,cytosol,ribosome,focal adhesion,large ribosomal subunit,membrane,cytosolic large ribosomal subunit,extracellular exosome,
Purification	The antibody was affinity-purified from rabbit antiserum by affinity-chromatography using epitope-specific immunogen.

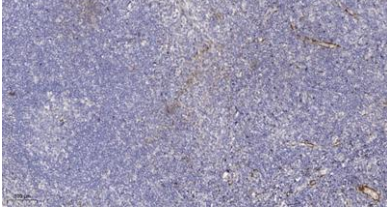
Clonality	Polyclonal
Concentration	1 mg/ml
Observed band	25kD
Human Gene ID	4736
Human Swiss-Prot Number	P62906
Alternative Names	RPL10A; NEDD6; 60S ribosomal protein L10a; CSA-19; Neural precursor cell expressed developmentally down-regulated protein 6; NEDD-6

Background

Ribosomes, the organelles that catalyze protein synthesis, consist of a small 40S subunit and a large 60S subunit. Together these subunits are composed of 4 RNA species and approximately 80 structurally distinct proteins. This gene encodes a ribosomal protein that is a component of the 60S subunit. The protein belongs to the L1P family of ribosomal proteins. It is located in the cytoplasm. The expression of this gene is downregulated in the thymus by cyclosporin-A (CsA), an immunosuppressive drug. Studies in mice have shown that the expression of the ribosomal protein L10a gene is downregulated in neural precursor cells during development. This gene previously was referred to as NEDD6 (neural precursor cell expressed, developmentally downregulated 6), but it has been renamed RPL10A (ribosomal protein 10a). As is typical for genes encoding ribosomal proteins, there are multiple processed pseudogenes



Western blot analysis of lysates from KB cells, primary antibody was diluted at 1:1000, 4° over night



Immunohistochemical analysis of paraffin-embedded human tonsil. 1, Antibody was diluted at 1:200(4° overnight). 2, Tris-EDTA,pH9.0 was used for antigen retrieval. 3,Secondary antibody was diluted at 1:200(room temperature, 45min).