

NDUFS5 rabbit pAb**Cat#: orb769226 (Manual)**

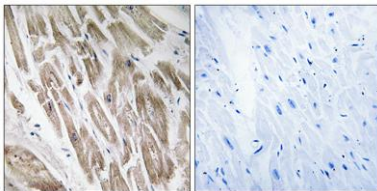
For research use only. Not intended for diagnostic use.

Product Name	NDUFS5 rabbit pAb
Host species	Rabbit
Applications	WB;IHC;IF;ELISA
Species Cross-Reactivity	Human;Rat;Mouse;
Recommended dilutions	Western Blot: 1/500 - 1/2000. Immunohistochemistry: 1/100 - 1/300. ELISA: 1/40000. Not yet tested in other applications.
Immunogen	The antiserum was produced against synthesized peptide derived from human NDUFS5. AA range:57-106
Specificity	NDUFS5 Polyclonal Antibody detects endogenous levels of NDUFS5 protein.
Formulation	Liquid in PBS containing 50% glycerol, 0.5% BSA and 0.02% sodium azide..
Storage	Store at -20°C. Avoid repeated freeze-thaw cycles.
Protein Name	NADH dehydrogenase [ubiquinone] iron-sulfur protein 5
Gene Name	NDUFS5
Cellular localization	Mitochondrion inner membrane ; Peripheral membrane protein . Mitochondrion intermembrane space .
Purification	The antibody was affinity-purified from rabbit antiserum by affinity-chromatography using epitope-specific immunogen.
Clonality	Polyclonal

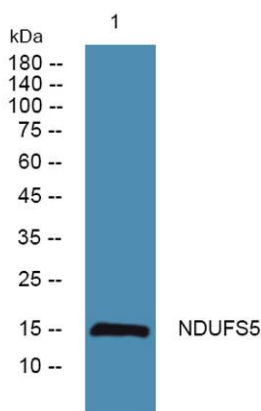
Concentration	1 mg/ml
Observed band	15kD
Human Gene ID	4725
Human Swiss-Prot Number	O43920
Alternative Names	NDUFS5; NADH dehydrogenase [ubiquinone] iron-sulfur protein 5; Complex I-15 kDa; CI-15 kDa; NADH-ubiquinone oxidoreductase 15 kDa subunit

Background

This gene is a member of the NADH dehydrogenase (ubiquinone) iron-sulfur protein family. The encoded protein is a subunit of the NADH:ubiquinone oxidoreductase (complex I), the first enzyme complex in the electron transport chain located in the inner mitochondrial membrane. Alternative splicing results in multiple transcript variants and pseudogenes have been identified on chromosomes 1, 4 and 17. [provided by RefSeq, May 2010],



Immunohistochemistry analysis of paraffin-embedded human heart, using NDUFS5 Antibody. The picture on the right is blocked with the synthesized peptide.



Western blot analysis of lysates from SH-SY5Y cells, primary antibody was diluted at 1:1000, 4^o over night