

p40-phox (phospho Thr154) rabbit pAb**Cat#: orb769214 (Manual)**

For research use only. Not intended for diagnostic use.

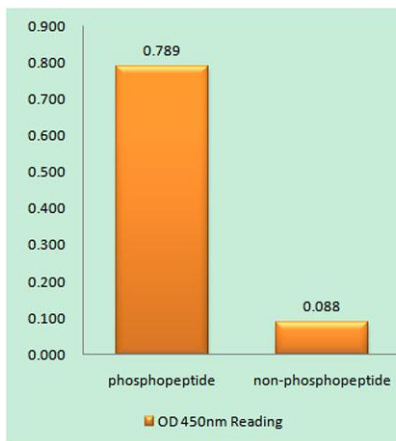
Product Name	p40-phox (phospho Thr154) rabbit pAb
Host species	Rabbit
Applications	IHC;IF;ELISA
Species Cross-Reactivity	Human;Mouse
Recommended dilutions	WB 1:500-2000 ,Immunohistochemistry: 1/100 - 1/300. ELISA: 1/5000. Not yet tested in other applications.
Immunogen	The antiserum was produced against synthesized peptide derived from human p40 phox around the phosphorylation site of Thr154. AA range:120-169
Specificity	Phospho-p40-phox (T154) Polyclonal Antibody detects endogenous levels of p40-phox protein only when phosphorylated at T154.
Formulation	Liquid in PBS containing 50% glycerol, 0.5% BSA and 0.02% sodium azide..
Storage	Store at -20°C. Avoid repeated freeze-thaw cycles.
Protein Name	Neutrophil cytosol factor 4
Gene Name	NCF4
Cellular localization	Cytoplasm, cytosol . Endosome membrane ; Peripheral membrane protein ; Cytoplasmic side . Membrane ; Peripheral membrane protein .
Purification	The antibody was affinity-purified from rabbit antiserum by affinity-chromatography using epitope-specific immunogen.
Clonality	Polyclonal

Explore. Bioreagents.

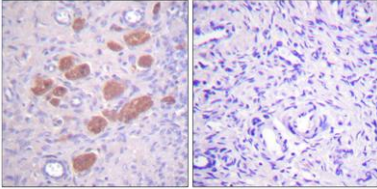
Concentration	1 mg/ml
Observed band	
Human Gene ID	4689
Human Swiss-Prot Number	Q15080
Alternative Names	NCF4; SH3PXD4; Neutrophil cytosol factor 4; NCF-4; Neutrophil NADPH oxidase factor 4; SH3 and PX domain-containing protein 4; p40-phox; p40phox

Background

The protein encoded by this gene is a cytosolic regulatory component of the superoxide-producing phagocyte NADPH-oxidase, a multicomponent enzyme system important for host defense. This protein is preferentially expressed in cells of myeloid lineage. It interacts primarily with neutrophil cytosolic factor 2 (NCF2/p67-phox) to form a complex with neutrophil cytosolic factor 1 (NCF1/p47-phox), which further interacts with the small G protein RAC1 and translocates to the membrane upon cell stimulation. This complex then activates flavocytochrome b, the membrane-integrated catalytic core of the enzyme system. The PX domain of this protein can bind phospholipid products of the PI(3) kinase, which suggests its role in PI(3) kinase-mediated signaling events. The phosphorylation of this protein was found to negatively regulate the enzyme activity. Alternatively spliced transcript variants encoding d



Enzyme-Linked Immunosorbent Assay (Phospho-ELISA) for Immunogen Phosphopeptide (Phospho-left) and Non-Phosphopeptide (Phospho-right), using p40 phox (Phospho-Thr154) Antibody



Immunohistochemistry analysis of paraffin-embedded human ovary, using p40 phox (Phospho-Thr154) Antibody. The picture on the right is blocked with the phospho peptide.