

**ATF-3 rabbit pAb****Cat#: orb769204 (Manual)**

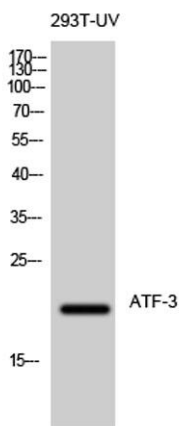
For research use only. Not intended for diagnostic use.

<b>Product Name</b>	ATF-3 rabbit pAb
<b>Host species</b>	Rabbit
<b>Applications</b>	WB;IHC;IF;ELISA
<b>Species Cross-Reactivity</b>	Human;Mouse;Rat
<b>Recommended dilutions</b>	WB 1:500-2000;IHC-p 1:100-500;IF/ICC 1:100-500;ELISA 1:5000-20000
<b>Immunogen</b>	The antiserum was produced against synthesized peptide derived from human ATF3. AA range:131-180
<b>Specificity</b>	ATF-3 Polyclonal Antibody detects endogenous levels of ATF-3 protein.
<b>Formulation</b>	Liquid in PBS containing 50% glycerol, 0.5% BSA and 0.02% sodium azide..
<b>Storage</b>	Store at -20°C. Avoid repeated freeze-thaw cycles.
<b>Protein Name</b>	Cyclic AMP-dependent transcription factor ATF-3
<b>Gene Name</b>	ATF3
<b>Cellular localization</b>	Nucleus .
<b>Purification</b>	The antibody was affinity-purified from rabbit antiserum by affinity-chromatography using epitope-specific immunogen.
<b>Clonality</b>	Polyclonal

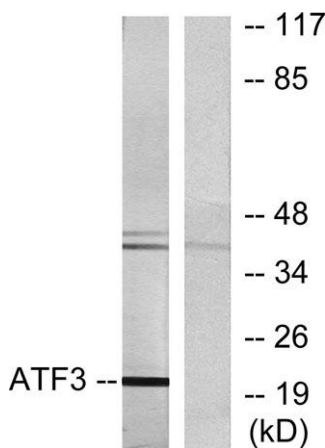
<b>Concentration</b>	1 mg/ml
<b>Observed band</b>	21kD
<b>Human Gene ID</b>	467
<b>Human Swiss-Prot Number</b>	P18847
<b>Alternative Names</b>	ATF3; Cyclic AMP-dependent transcription factor ATF-3; cAMP-dependent transcription factor ATF-3; Activating transcription factor 3

**Background**

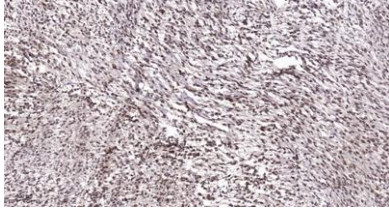
activating transcription factor 3(ATF3) Homo sapiens This gene encodes a member of the mammalian activation transcription factor/cAMP responsive element-binding (CREB) protein family of transcription factors. This gene is induced by a variety of signals, including many of those encountered by cancer cells, and is involved in the complex process of cellular stress response. Multiple transcript variants encoding different isoforms have been found for this gene. It is possible that alternative splicing of this gene may be physiologically important in the regulation of target genes. [provided by RefSeq, Apr 2011],



**Western Blot analysis of 293T-UV cells using ATF-3 Polyclonal Antibody diluted at 1:500 cells nucleus extracted by Minute™ Cytoplasmic and Nuclear Fractionation kit (SC-003, Invent biotech, MN, USA).**



**Western blot analysis of lysates from RAW264.7 cells, using ATF3 Antibody. The lane on the right is blocked with the synthesized peptide.**



**Immunohistochemical analysis of paraffin-embedded human Colon cancer. 1, Antibody was diluted at 1:200(4° overnight). 2, Tris-EDTA,pH9.0 was used for antigen retrieval. 3,Secondary antibody was diluted at 1:200(room temperature, 45min).**