

MyoD (phospho Ser200) rabbit pAb**Cat#: orb769196 (Manual)**

For research use only. Not intended for diagnostic use.

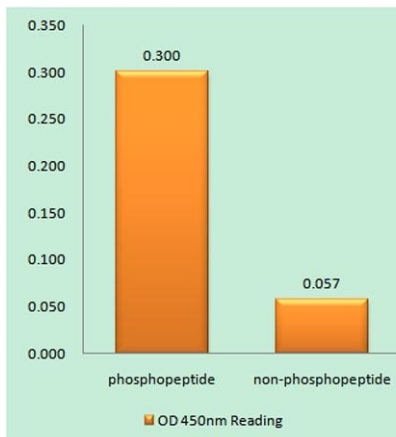
Product Name	MyoD (phospho Ser200) rabbit pAb
Host species	Rabbit
Applications	WB;IHC;IF;ELISA
Species Cross-Reactivity	Human;Mouse;Rat
Recommended dilutions	Western Blot: 1/500 - 1/2000. Immunohistochemistry: 1/100 - 1/300. ELISA: 1/5000. Not yet tested in other applications.
Immunogen	The antiserum was produced against synthesized peptide derived from human MYOD around the phosphorylation site of Ser200. AA range:171-220
Specificity	Phospho-MyoD (S200) Polyclonal Antibody detects endogenous levels of MyoD protein only when phosphorylated at S200.
Formulation	Liquid in PBS containing 50% glycerol, 0.5% BSA and 0.02% sodium azide..
Storage	Store at -20°C. Avoid repeated freeze-thaw cycles.
Protein Name	Myoblast determination protein 1
Gene Name	MYOD1
Cellular localization	Nucleus.
Purification	The antibody was affinity-purified from rabbit antiserum by affinity-chromatography using epitope-specific immunogen.
Clonality	Polyclonal

Explore. Bioreagents.

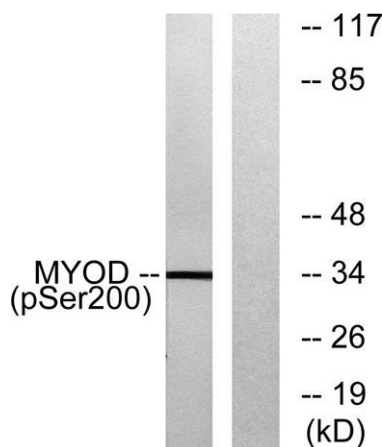
Concentration	1 mg/ml
Observed band	34kD
Human Gene ID	4654
Human Swiss-Prot Number	P15172
Alternative Names	MYOD1; BHLHC1; MYF3; MYOD; Myoblast determination protein 1; Class C basic helix-loop-helix protein 1; bHLHc1; Myogenic factor 3; Myf-3

Background

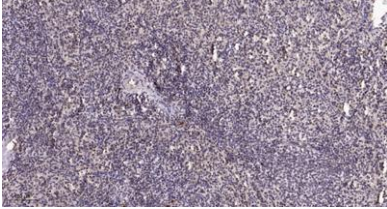
This gene encodes a nuclear protein that belongs to the basic helix-loop-helix family of transcription factors and the myogenic factors subfamily. It regulates muscle cell differentiation by inducing cell cycle arrest, a prerequisite for myogenic initiation. The protein is also involved in muscle regeneration. It activates its own transcription which may stabilize commitment to myogenesis. [provided by RefSeq, Jul 2008],



Enzyme-Linked Immunosorbent Assay (Phospho-ELISA) for Immunogen Phosphopeptide (Phospho-left) and Non-Phosphopeptide (Phospho-right), using MYOD (Phospho-Ser200) Antibody



Western blot analysis of lysates from Jurkat cells treated with Ca⁺ 40nM 30', using MYOD (Phospho-Ser200) Antibody. The lane on the right is blocked with the phospho peptide.



Immunohistochemical analysis of paraffin-embedded human spleen. 1, Tris-EDTA, pH 9.0 was used for antigen retrieval. 2 Antibody was diluted at 1:200 (4° overnight). 3, Secondary antibody was diluted at 1:200 (room temperature, 45 min).