

B-Myb rabbit pAb**Cat#: orb769178 (Manual)**

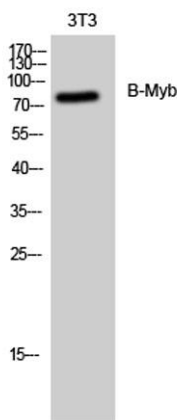
For research use only. Not intended for diagnostic use.

Product Name	B-Myb rabbit pAb
Host species	Rabbit
Applications	WB;IP;IF;ELISA
Species Cross-Reactivity	Human;Mouse;Rat;Rice
Recommended dilutions	Western Blot: 1/500 - 1/2000. Immunofluorescence: 1/200 - 1/1000. ELISA: 1/20000. Not yet tested in other applications.
Immunogen	The antiserum was produced against synthesized peptide derived from human B-Myb. AA range:551-600
Specificity	B-Myb Polyclonal Antibody detects endogenous levels of B-Myb protein.
Formulation	Liquid in PBS containing 50% glycerol, 0.5% BSA and 0.02% sodium azide..
Storage	Store at -20°C. Avoid repeated freeze-thaw cycles.
Protein Name	Myb-related protein B
Gene Name	MYBL2
Cellular localization	Nucleus.
Purification	The antibody was affinity-purified from rabbit antiserum by affinity-chromatography using epitope-specific immunogen.
Clonality	Polyclonal

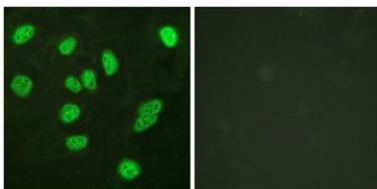
Concentration	1 mg/ml
Observed band	80kD
Human Gene ID	4605
Human Swiss-Prot Number	P10244
Alternative Names	MYBL2; BMYB; Myb-related protein B; B-Myb; Myb-like protein 2

Background

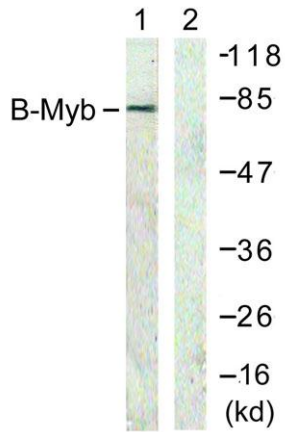
The protein encoded by this gene, a member of the MYB family of transcription factor genes, is a nuclear protein involved in cell cycle progression. The encoded protein is phosphorylated by cyclin A/cyclin-dependent kinase 2 during the S-phase of the cell cycle and possesses both activator and repressor activities. It has been shown to activate the cell division cycle 2, cyclin D1, and insulin-like growth factor-binding protein 5 genes. Two transcript variants encoding different isoforms have been found for this gene. [provided by RefSeq, Jul 2013],



Western Blot analysis of 3T3 cells using B-Myb Polyclonal Antibody diluted at 1:2000 cells nucleus extracted by Minute™ Cytoplasmic and Nuclear Fractionation kit (SC-003, Invent biotech, MN, USA).



Immunofluorescence analysis of HeLa cells, using B-Myb Antibody. The picture on the right is blocked with the synthesized peptide.



Western blot analysis of lysates from A549 cells, using B-Myb Antibody. The lane on the right is blocked with the synthesized peptide.