

GCN2 (phospho Thr899) rabbit pAb**Cat#: orb769145 (Manual)**

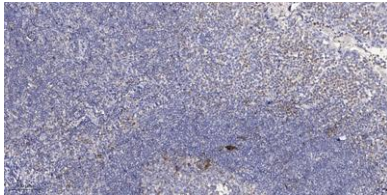
For research use only. Not intended for diagnostic use.

Product Name	GCN2 (phospho Thr899) rabbit pAb
Host species	Rabbit
Applications	IHC;IF;ELISA
Species Cross-Reactivity	Human;Mouse
Recommended dilutions	Immunohistochemistry: 1/100 - 1/300. ELISA: 1/5000. Not yet tested in other applications.
Immunogen	The antiserum was produced against synthesized peptide derived from human GCN2 around the phosphorylation site of Thr899. AA range:865-914
Specificity	Phospho-GCN2 (T899) Polyclonal Antibody detects endogenous levels of GCN2 protein only when phosphorylated at T899.
Formulation	Liquid in PBS containing 50% glycerol, 0.5% BSA and 0.02% sodium azide..
Storage	Store at -20°C. Avoid repeated freeze-thaw cycles.
Protein Name	Eukaryotic translation initiation factor 2-alpha kinase 4
Gene Name	EIF2AK4
Cellular localization	Cytoplasm .
Purification	The antibody was affinity-purified from rabbit antiserum by affinity-chromatography using epitope-specific immunogen.
Clonality	Polyclonal

Concentration	1 mg/ml
Observed band	
Human Gene ID	440275
Human Swiss-Prot Number	Q9P2K8
Alternative Names	EIF2AK4; GCN2; KIAA1338; Eukaryotic translation initiation factor 2-alpha kinase 4; GCN2-like protein

Background

This gene encodes a member of a family of kinases that phosphorylate the alpha subunit of eukaryotic translation initiation factor-2 (EIF2), resulting in the downregulation of protein synthesis. The encoded protein responds to amino acid deprivation by binding uncharged transfer RNAs. It may also be activated by glucose deprivation and viral infection. Mutations in this gene have been found in individuals suffering from autosomal recessive pulmonary venoocclusive-disease-2. [provided by RefSeq, Mar 2014],



Immunohistochemical analysis of paraffin-embedded human tonsil. 1, Antibody was diluted at 1:200(4° overnight). 2, Tris-EDTA,pH9.0 was used for antigen retrieval. 3,Secondary antibody was diluted at 1:200(room temperature, 30min).