

**MMP-8 rabbit pAb****Cat#: orb769135 (Manual)**

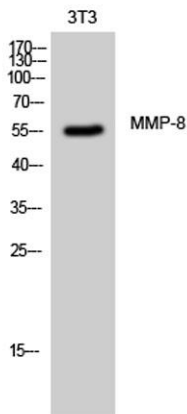
For research use only. Not intended for diagnostic use.

<b>Product Name</b>	MMP-8 rabbit pAb
<b>Host species</b>	Rabbit
<b>Applications</b>	WB;IHC;IF;ELISA
<b>Species Cross-Reactivity</b>	Human;Mouse;Rat
<b>Recommended dilutions</b>	Western Blot: 1/500 - 1/2000. Immunohistochemistry: 1/100 - 1/300. ELISA: 1/20000. Not yet tested in other applications.
<b>Immunogen</b>	The antiserum was produced against synthesized peptide derived from human MMP-8. AA range:418-467
<b>Specificity</b>	MMP-8 Polyclonal Antibody detects endogenous levels of MMP-8 protein.
<b>Formulation</b>	Liquid in PBS containing 50% glycerol, 0.5% BSA and 0.02% sodium azide..
<b>Storage</b>	Store at -20°C. Avoid repeated freeze-thaw cycles.
<b>Protein Name</b>	Neutrophil collagenase
<b>Gene Name</b>	MMP8
<b>Cellular localization</b>	Cytoplasmic granule. Secreted, extracellular space, extracellular matrix . Stored in intracellular granules.
<b>Purification</b>	The antibody was affinity-purified from rabbit antiserum by affinity-chromatography using epitope-specific immunogen.
<b>Clonality</b>	Polyclonal

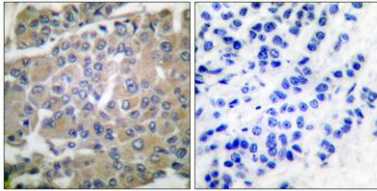
<b>Concentration</b>	1 mg/ml
<b>Observed band</b>	55kD
<b>Human Gene ID</b>	4317
<b>Human Swiss-Prot Number</b>	P22894
<b>Alternative Names</b>	MMP8; CLG1; Neutrophil collagenase; Matrix metalloproteinase-8; MMP-8; PMNL collagenase; PMNL-CL

**Background**

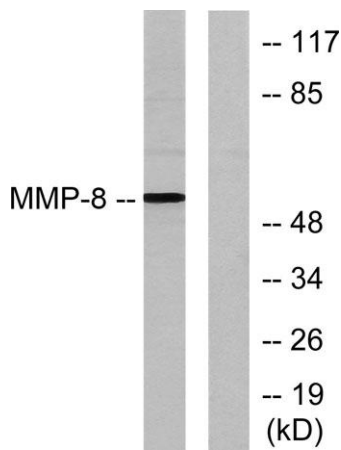
matrix metalloproteinase 8(MMP8) Homo sapiens This gene encodes a member of the matrix metalloproteinase (MMP) family of proteins. These proteins are involved in the breakdown of extracellular matrix in embryonic development, reproduction, and tissue remodeling, as well as in disease processes, such as arthritis and metastasis. Proteolysis at different sites on this protein results in multiple active forms of the enzyme with distinct N-termini. This protein functions in the degradation of type I, II and III collagens. The gene is part of a cluster of MMP genes which localize to chromosome 11q22.3. Alternative splicing results in multiple transcript variants. [provided by RefSeq, Jan 2015],



**Western Blot analysis of 3T3 cells using MMP-8 Polyclonal Antibody**



Immunohistochemistry analysis of paraffin-embedded human breast carcinoma tissue, using MMP-8 Antibody. The picture on the right is blocked with the synthesized peptide.



Western blot analysis of lysates from NIH/3T3 cells, using MMP-8 Antibody. The lane on the right is blocked with the synthesized peptide.