

**FoxO4 (phospho Ser262) rabbit pAb****Cat#: orb769133 (Manual)**

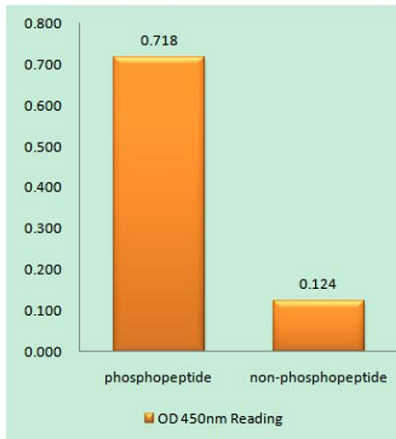
For research use only. Not intended for diagnostic use.

<b>Product Name</b>	FoxO4 (phospho Ser262) rabbit pAb
<b>Host species</b>	Rabbit
<b>Applications</b>	WB;IHC;IF;ELISA
<b>Species Cross-Reactivity</b>	Human;Mouse
<b>Recommended dilutions</b>	Western Blot: 1/500 - 1/2000. Immunohistochemistry: 1/100 - 1/300. ELISA: 1/10000. Not yet tested in other applications.
<b>Immunogen</b>	The antiserum was produced against synthesized peptide derived from human FOXO4 around the phosphorylation site of Ser262. AA range:228-277
<b>Specificity</b>	Phospho-FoxO4 (S262) Polyclonal Antibody detects endogenous levels of FoxO4 protein only when phosphorylated at S262.
<b>Formulation</b>	Liquid in PBS containing 50% glycerol, 0.5% BSA and 0.02% sodium azide..
<b>Storage</b>	Store at -20°C. Avoid repeated freeze-thaw cycles.
<b>Protein Name</b>	Forkhead box protein O4
<b>Gene Name</b>	FOXO4
<b>Cellular localization</b>	Cytoplasm. Nucleus. When phosphorylated, translocated from nucleus to cytoplasm. Dephosphorylation triggers nuclear translocation. Monoubiquitination increases nuclear localization. When deubiquitinated, translocated from nucleus to cytoplasm.
<b>Purification</b>	The antibody was affinity-purified from rabbit antiserum by affinity-chromatography using epitope-specific immunogen.

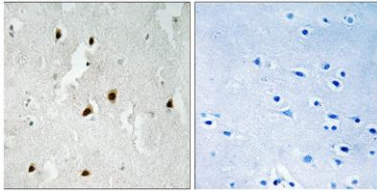
<b>Clonality</b>	Polyclonal
<b>Concentration</b>	1 mg/ml
<b>Observed band</b>	54kD
<b>Human Gene ID</b>	4303
<b>Human Swiss-Prot Number</b>	P98177
<b>Alternative Names</b>	FOXO4; AFX; AFX1; MLLT7; Forkhead box protein O4; Fork head domain transcription factor AFX1

## Background

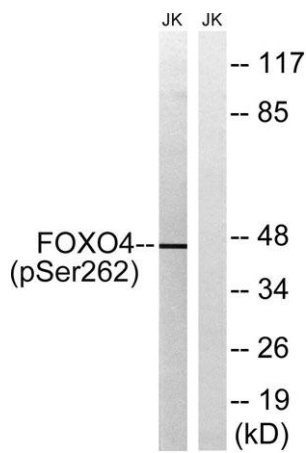
This gene encodes a member of the O class of winged helix/forkhead transcription factor family. Proteins encoded by this class are regulated by factors involved in growth and differentiation indicating they play a role in these processes. A translocation involving this gene on chromosome X and the homolog of the *Drosophila* trithorax gene, encoding a DNA binding protein, located on chromosome 11 is associated with leukemia. Multiple transcript variants encoding different isoforms have been found for this gene. [provided by RefSeq, Jan 2010],



**Enzyme-Linked Immunosorbent Assay (Phospho-ELISA) for Immunogen Phosphopeptide (Phospho-left) and Non-Phosphopeptide (Phospho-right), using FOXO4 (Phospho-Ser262) Antibody**



**Immunohistochemistry analysis of paraffin-embedded human brain, using FOXO4 (Phospho-Ser262) Antibody. The picture on the right is blocked with the phospho peptide.**



**Western blot analysis of lysates from Jurkat cells treated with starved 24h, using FOXO4 (Phospho-Ser262) Antibody. The lane on the right is blocked with the phospho peptide.**