

**MLK1 rabbit pAb****Cat#: orb769123 (Manual)**

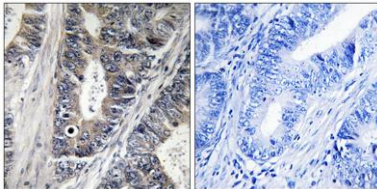
For research use only. Not intended for diagnostic use.

<b>Product Name</b>	MLK1 rabbit pAb
<b>Host species</b>	Rabbit
<b>Applications</b>	IHC;IF;ELISA
<b>Species Cross-Reactivity</b>	Human;Mouse
<b>Recommended dilutions</b>	Immunohistochemistry: 1/100 - 1/300. ELISA: 1/20000. Not yet tested in other applications.
<b>Immunogen</b>	The antiserum was produced against synthesized peptide derived from human MAP3K9. AA range:561-610
<b>Specificity</b>	MLK1 Polyclonal Antibody detects endogenous levels of MLK1 protein.
<b>Formulation</b>	Liquid in PBS containing 50% glycerol, 0.5% BSA and 0.02% sodium azide..
<b>Storage</b>	Store at -20°C. Avoid repeated freeze-thaw cycles.
<b>Protein Name</b>	Mitogen-activated protein kinase kinase kinase 9
<b>Gene Name</b>	MAP3K9
<b>Cellular localization</b>	intracellular,integral component of membrane,
<b>Purification</b>	The antibody was affinity-purified from rabbit antiserum by affinity-chromatography using epitope-specific immunogen.
<b>Clonality</b>	Polyclonal

<b>Concentration</b>	1 mg/ml
<b>Observed band</b>	
<b>Human Gene ID</b>	4293
<b>Human Swiss-Prot Number</b>	P80192
<b>Alternative Names</b>	MAP3K9; MLK1; PRKE1; Mitogen-activated protein kinase kinase kinase 9; Mixed lineage kinase 1

**Background**

MAP3K9 (Mitogen-Activated Protein Kinase Kinase 9) is a Protein Coding gene. Diseases associated with MAP3K9 include retroperitoneal neuroblastoma. Among its related pathways are MAP Kinase Signaling and TGF-Beta Pathway. GO annotations related to this gene include protein homodimerization activity and protein kinase activity. An important paralog of this gene is KSR1.



**Immunohistochemistry analysis of paraffin-embedded human colon carcinoma tissue, using MAP3K9 Antibody. The picture on the right is blocked with the synthesized peptide.**