

**MITF (phospho Ser180) rabbit pAb****Cat#: orb769120 (Manual)**

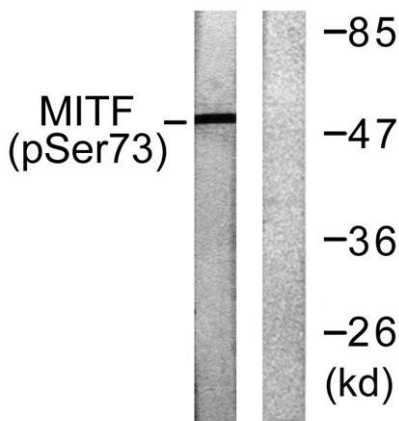
For research use only. Not intended for diagnostic use.

<b>Product Name</b>	MITF (phospho Ser180) rabbit pAb
<b>Host species</b>	Rabbit
<b>Applications</b>	WB;IHC;IF;ELISA
<b>Species Cross-Reactivity</b>	Human;Mouse;Monkey
<b>Recommended dilutions</b>	Western Blot: 1/500 - 1/2000. Immunohistochemistry: 1/100 - 1/300. ELISA: 1/10000. Not yet tested in other applications.
<b>Immunogen</b>	The antiserum was produced against synthesized peptide derived from human MITF around the phosphorylation site of Ser180/73. AA range:151-200
<b>Specificity</b>	Phospho-MITF (S180) Polyclonal Antibody detects endogenous levels of MITF protein only when phosphorylated at S180.
<b>Formulation</b>	Liquid in PBS containing 50% glycerol, 0.5% BSA and 0.02% sodium azide..
<b>Storage</b>	Store at -20°C. Avoid repeated freeze-thaw cycles.
<b>Protein Name</b>	Microphthalmia-associated transcription factor
<b>Gene Name</b>	MITF
<b>Cellular localization</b>	Nucleus . Cytoplasm . Found exclusively in the nucleus upon phosphorylation. .
<b>Purification</b>	The antibody was affinity-purified from rabbit antiserum by affinity-chromatography using epitope-specific immunogen.
<b>Clonality</b>	Polyclonal

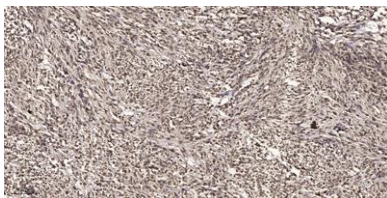
<b>Concentration</b>	1 mg/ml
<b>Observed band</b>	52kD
<b>Human Gene ID</b>	4286
<b>Human Swiss-Prot Number</b>	O75030
<b>Alternative Names</b>	MITF; BHLHE32; Microphthalmia-associated transcription factor; Class E basic helix-loop-helix protein 32; bHLHe32

## Background

This gene encodes a transcription factor that contains both basic helix-loop-helix and leucine zipper structural features. It regulates the differentiation and development of melanocytes retinal pigment epithelium and is also responsible for pigment cell-specific transcription of the melanogenesis enzyme genes. Heterozygous mutations in the this gene cause auditory-pigmentary syndromes, such as Waardenburg syndrome type 2 and Tietz syndrome. Alternatively spliced transcript variants encoding different isoforms have been identified. [provided by RefSeq, Jul 2008],



Western blot analysis of lysates from COS7 cells, using MITF (Phospho-Ser180/73) Antibody. The lane on the right is blocked with the phospho peptide.



Immunohistochemical analysis of paraffin-embedded human small intestinal carcinoma tissue. 1,primary Antibody was diluted at 1:200(4° overnight). 2, Sodium citrate pH 6.0 was used for antigen retrieval(>98°C,20min). 3,Secondary antibody was diluted at 1:2



Explore. Bioreagents.

[www.biorbyt.com](http://www.biorbyt.com)