

**MEK Kinase-1 (phospho Thr1402) rabbit pAb****Cat#: orb769103 (Manual)**

For research use only. Not intended for diagnostic use.

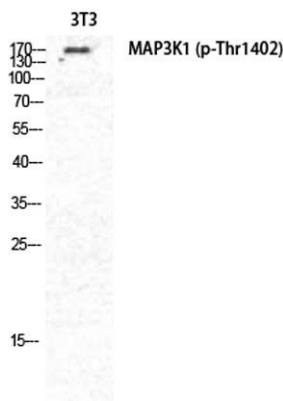
<b>Product Name</b>	MEK Kinase-1 (phospho Thr1402) rabbit pAb
<b>Host species</b>	Rabbit
<b>Applications</b>	WB;IHC;IF;ELISA
<b>Species Cross-Reactivity</b>	Human;Mouse;Rat
<b>Recommended dilutions</b>	Western Blot: 1/500 - 1/2000. Immunohistochemistry: 1/100 - 1/300. ELISA: 1/40000. Not yet tested in other applications.
<b>Immunogen</b>	The antiserum was produced against synthesized peptide derived from human MAP3K1 around the phosphorylation site of Thr1402. AA range:1368-1417
<b>Specificity</b>	Phospho-MEK Kinase-1 (T1402) Polyclonal Antibody detects endogenous levels of MEK Kinase-1 protein only when phosphorylated at T1402.
<b>Formulation</b>	Liquid in PBS containing 50% glycerol, 0.5% BSA and 0.02% sodium azide..
<b>Storage</b>	Store at -20°C. Avoid repeated freeze-thaw cycles.
<b>Protein Name</b>	Mitogen-activated protein kinase kinase kinase 1
<b>Gene Name</b>	MAP3K1
<b>Cellular localization</b>	cytoplasm,cytosol,
<b>Purification</b>	The antibody was affinity-purified from rabbit antiserum by affinity-chromatography using epitope-specific immunogen.
<b>Clonality</b>	Polyclonal

Explore. Bioreagents.

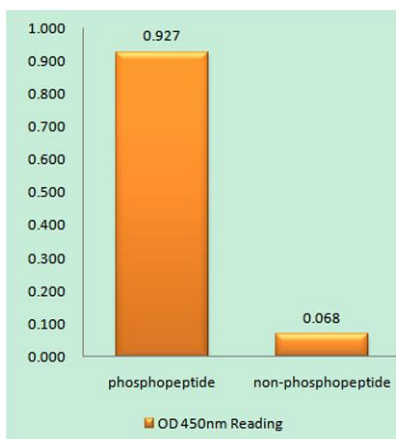
<b>Concentration</b>	1 mg/ml
<b>Observed band</b>	160kD
<b>Human Gene ID</b>	4214
<b>Human Swiss-Prot Number</b>	Q13233
<b>Alternative Names</b>	MAP3K1; MAPKKK1; MEKK; MEKK1; Mitogen-activated protein kinase kinase kinase 1; MAPK/ERK kinase kinase 1; MEK kinase 1; MEKK 1

### Background

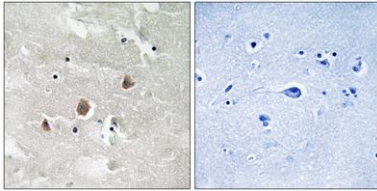
The protein encoded by this gene is a serine/threonine kinase and is part of some signal transduction cascades, including the ERK and JNK kinase pathways as well as the NF-kappa-B pathway. The encoded protein is activated by autophosphorylation and requires magnesium as a cofactor in phosphorylating other proteins. This protein has E3 ligase activity conferred by a plant homeodomain (PHD) in its N-terminus and phospho-kinase activity conferred by a kinase domain in its C-terminus. [provided by RefSeq, Mar 2012],



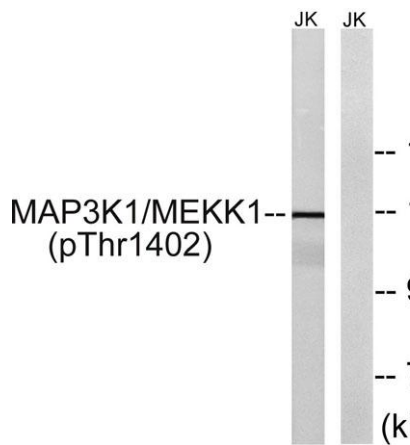
**Western Blot analysis of NIH-3T3 cells using Phospho-MEK Kinase-1 (T1402) Polyclonal Antibody diluted at 1:2000**



**Enzyme-Linked Immunosorbent Assay (Phospho-ELISA) for Immunogen Phosphopeptide (Phospho-left) and Non-Phosphopeptide (Phospho-right), using MAP3K1 (Phospho-Thr1402) Antibody**



Immunohistochemistry analysis of paraffin-embedded human brain, using MAP3K1 (Phospho-Thr1402) Antibody. The picture on the right is blocked with the phospho peptide.



Western blot analysis of lysates from Jurkat cells, using MAP3K1 (Phospho-Thr1402) Antibody. The lane on the right is blocked with the phospho peptide.