

**MEF-2C (phospho Ser396) rabbit pAb****Cat#: orb769096 (Manual)**

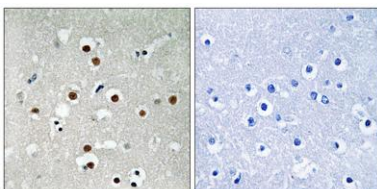
For research use only. Not intended for diagnostic use.

<b>Product Name</b>	MEF-2C (phospho Ser396) rabbit pAb
<b>Host species</b>	Rabbit
<b>Applications</b>	WB;IHC;IF;ELISA
<b>Species Cross-Reactivity</b>	Human;Mouse
<b>Recommended dilutions</b>	Western Blot: 1/500 - 1/2000. Immunohistochemistry: 1/100 - 1/300. ELISA: 1/10000. Not yet tested in other applications.
<b>Immunogen</b>	The antiserum was produced against synthesized peptide derived from human MEF2C around the phosphorylation site of Ser396. AA range:362-411
<b>Specificity</b>	Phospho-MEF-2C (S396) Polyclonal Antibody detects endogenous levels of MEF-2C protein only when phosphorylated at S396.
<b>Formulation</b>	Liquid in PBS containing 50% glycerol, 0.5% BSA and 0.02% sodium azide..
<b>Storage</b>	Store at -20°C. Avoid repeated freeze-thaw cycles.
<b>Protein Name</b>	Myocyte-specific enhancer factor 2C
<b>Gene Name</b>	MEF2C
<b>Cellular localization</b>	Nucleus . Cytoplasm, sarcoplasm .
<b>Purification</b>	The antibody was affinity-purified from rabbit antiserum by affinity-chromatography using epitope-specific immunogen.
<b>Clonality</b>	Polyclonal

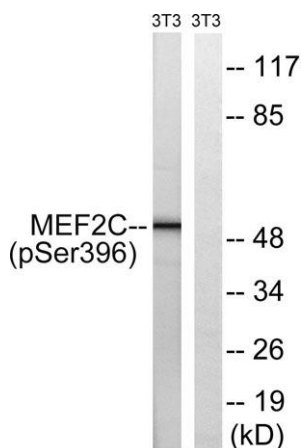
<b>Concentration</b>	1 mg/ml
<b>Observed band</b>	51kD
<b>Human Gene ID</b>	4208
<b>Human Swiss-Prot Number</b>	Q06413
<b>Alternative Names</b>	MEF2C; Myocyte-specific enhancer factor 2C

**Background**

This locus encodes a member of the MADS box transcription enhancer factor 2 (MEF2) family of proteins, which play a role in myogenesis. The encoded protein, MEF2 polypeptide C, has both trans-activating and DNA binding activities. This protein may play a role in maintaining the differentiated state of muscle cells. Mutations and deletions at this locus have been associated with severe mental retardation, stereotypic movements, epilepsy, and cerebral malformation. Alternatively spliced transcript variants have been described. [provided by RefSeq, Jul 2010],



**Immunohistochemistry analysis of paraffin-embedded human brain, using MEF2C (Phospho-Ser396) Antibody. The picture on the right is blocked with the phospho peptide.**



**Western blot analysis of lysates from NIH/3T3 cells treated with starved 24h, using MEF2C (Phospho-Ser396) Antibody. The lane on the right is blocked with the phospho peptide.**



Explore. Bioreagents.

[www.biorbyt.com](http://www.biorbyt.com)