

**Mcl-1 (phospho Ser159) rabbit pAb****Cat#: orb769080 (Manual)**

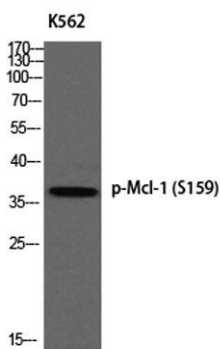
For research use only. Not intended for diagnostic use.

<b>Product Name</b>	Mcl-1 (phospho Ser159) rabbit pAb
<b>Host species</b>	Rabbit
<b>Applications</b>	WB;ELISA;IHC
<b>Species Cross-Reactivity</b>	Human;Mouse
<b>Recommended dilutions</b>	WB 1:500-2000;IHC-p 1:50-300; ELISA 2000-20000
<b>Immunogen</b>	The antiserum was produced against synthesized peptide derived from human MCL1 around the phosphorylation site of Ser159. AA range:125-174
<b>Specificity</b>	Phospho-Mcl-1 (S159) Polyclonal Antibody detects endogenous levels of Mcl-1 protein only when phosphorylated at S159.
<b>Formulation</b>	Liquid in PBS containing 50% glycerol, 0.5% BSA and 0.02% sodium azide..
<b>Storage</b>	Store at -20°C. Avoid repeated freeze-thaw cycles.
<b>Protein Name</b>	Induced myeloid leukemia cell differentiation protein Mcl-1
<b>Gene Name</b>	MCL1
<b>Cellular localization</b>	Membrane ; Single-pass membrane protein . Cytoplasm. Mitochondrion. Nucleus, nucleoplasm. Cytoplasmic, associated with mitochondria.
<b>Purification</b>	The antibody was affinity-purified from rabbit antiserum by affinity-chromatography using epitope-specific immunogen.
<b>Clonality</b>	Polyclonal

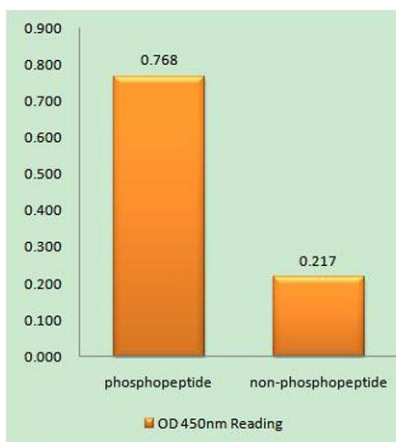
<b>Concentration</b>	1 mg/ml
<b>Observed band</b>	About 40kd in human,39kd in mouse and rat
<b>Human Gene ID</b>	4170
<b>Human Swiss-Prot Number</b>	Q07820
<b>Alternative Names</b>	MCL1; BCL2L3; Induced myeloid leukemia cell differentiation protein Mcl-1; Bcl-2-like protein 3; Bcl2-L-3; Bcl-2-related protein EAT/mcl1; mcl1/EAT

### Background

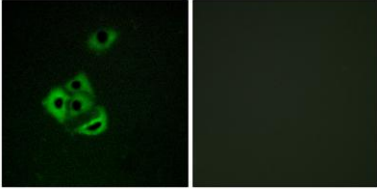
This gene encodes an anti-apoptotic protein, which is a member of the Bcl-2 family. Alternative splicing results in multiple transcript variants. The longest gene product (isoform 1) enhances cell survival by inhibiting apoptosis while the alternatively spliced shorter gene products (isoform 2 and isoform 3) promote apoptosis and are death-inducing. [provided by RefSeq, Oct 2010],



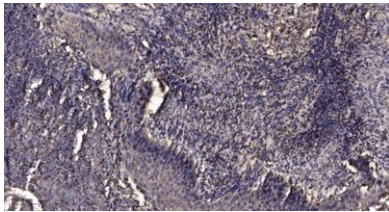
Western blot analysis of K562 using p-Mcl-1 (S159) antibody.



Enzyme-Linked Immunosorbent Assay (Phospho-ELISA) for Immunogen Phosphopeptide (Phospho-left) and Non-Phosphopeptide (Phospho-right), using MCL1 (Phospho-Ser159) Antibody



**Immunofluorescence analysis of A549 cells, using MCL1 (Phospho-Ser159) Antibody. The picture on the right is blocked with the phospho peptide.**



**Immunohistochemical analysis of paraffin-embedded human Squamous cell carcinoma of lung. 1, Antibody was diluted at 1:200(4° overnight). 2, Tris-EDTA,pH9.0 was used for antigen retrieval. 3,Secondary antibody was diluted at 1:200(room temperature, 45min).**