

CD71/TfR (phospho Ser24) rabbit pAb**Cat#: orb769075 (Manual)**

For research use only. Not intended for diagnostic use.

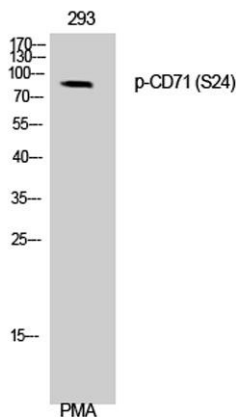
Product Name	CD71/TfR (phospho Ser24) rabbit pAb
Host species	Rabbit
Applications	WB;IHC;IF;ELISA
Species Cross-Reactivity	Human;Mouse
Recommended dilutions	Western Blot: 1/500 - 1/2000. Immunohistochemistry: 1/100 - 1/300. ELISA: 1/10000. Not yet tested in other applications.
Immunogen	The antiserum was produced against synthesized peptide derived from human CD71/TfR around the phosphorylation site of Ser24. AA range:15-64
Specificity	Phospho-CD71 (S24) Polyclonal Antibody detects endogenous levels of CD71 protein only when phosphorylated at S24.
Formulation	Liquid in PBS containing 50% glycerol, 0.5% BSA and 0.02% sodium azide..
Storage	Store at -20°C. Avoid repeated freeze-thaw cycles.
Protein Name	Transferrin receptor protein 1
Gene Name	TFRC
Cellular localization	Cell membrane ; Single-pass type II membrane protein . Melanosome . Identified by mass spectrometry in melanosome fractions from stage I to stage IV. . ; [Transferrin receptor protein 1, serum form]: Secreted .
Purification	The antibody was affinity-purified from rabbit antiserum by affinity-chromatography using epitope-specific immunogen.

Explore. Bioreagents.

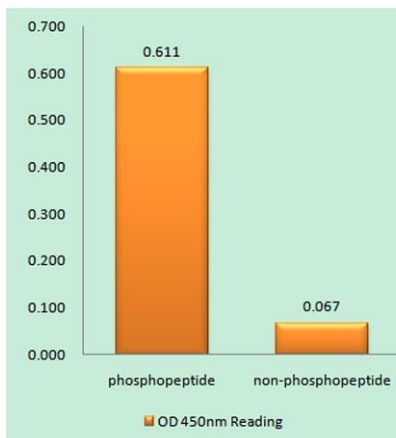
Clonality	Polyclonal
Concentration	1 mg/ml
Observed band	89kD
Human Gene ID	4155
Human Swiss-Prot Number	P02786
Alternative Names	TFRC; Transferrin receptor protein 1; TR; TfR; TfR1; Trfr; T9; p90; CD antigen CD71

Background

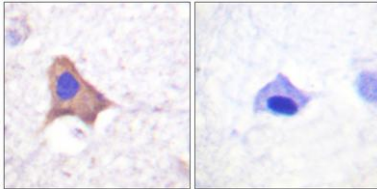
This gene encodes a cell surface receptor necessary for cellular iron uptake by the process of receptor-mediated endocytosis. This receptor is required for erythropoiesis and neurologic development. Multiple alternatively spliced variants have been identified. [provided by RefSeq, Sep 2015],



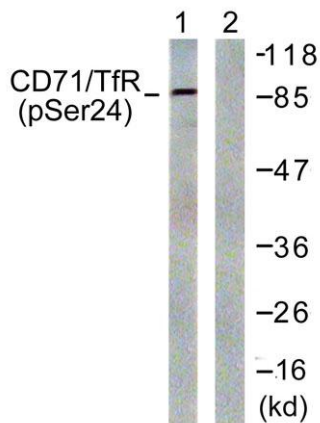
Western Blot analysis of 293 cells using Phospho-CD71 (S24) Polyclonal Antibody



Enzyme-Linked Immunosorbent Assay (Phospho-ELISA) for Immunogen Phosphopeptide (Phospho-left) and Non-Phosphopeptide (Phospho-right), using CD71/TfR (Phospho-Ser24) Antibody



Immunohistochemistry analysis of paraffin-embedded human brain, using CD71/TfR (Phospho-Ser24) Antibody. The picture on the right is blocked with the phospho peptide.



Western blot analysis of lysates from 293 cells treated with PMA 125ng/ml 30', using CD71/TfR (Phospho-Ser24) Antibody. The lane on the right is blocked with the phospho peptide.