

**Rho GDI $\alpha$  (phospho Ser174) rabbit pAb****Cat#: orb768981 (Manual)**

For research use only. Not intended for diagnostic use.

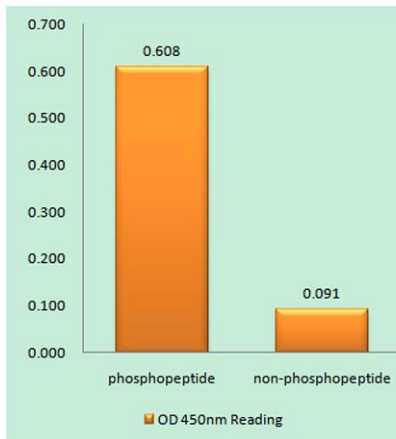
<b>Product Name</b>	Rho GDI $\alpha$ (phospho Ser174) rabbit pAb
<b>Host species</b>	Rabbit
<b>Applications</b>	WB;IHC;IF;ELISA
<b>Species Cross-Reactivity</b>	Human;Mouse;Rat
<b>Recommended dilutions</b>	Western Blot: 1/500 - 1/2000. Immunohistochemistry: 1/100 - 1/300. ELISA: 1/20000. Not yet tested in other applications.
<b>Immunogen</b>	The antiserum was produced against synthesized peptide derived from human ARHGDI $\alpha$ around the phosphorylation site of Ser174. AA range:140-189
<b>Specificity</b>	Phospho-Rho GDI $\alpha$ (S174) Polyclonal Antibody detects endogenous levels of Rho GDI $\alpha$ protein only when phosphorylated at S174.
<b>Formulation</b>	Liquid in PBS containing 50% glycerol, 0.5% BSA and 0.02% sodium azide..
<b>Storage</b>	Store at -20°C. Avoid repeated freeze-thaw cycles.
<b>Protein Name</b>	Rho GDP-dissociation inhibitor 1
<b>Gene Name</b>	ARHGDI $\alpha$
<b>Cellular localization</b>	Cytoplasm .
<b>Purification</b>	The antibody was affinity-purified from rabbit antiserum by affinity-chromatography using epitope-specific immunogen.
<b>Clonality</b>	Polyclonal

Explore. Bioreagents.

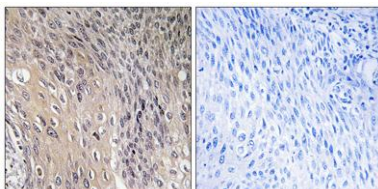
<b>Concentration</b>	1 mg/ml
<b>Observed band</b>	23kD
<b>Human Gene ID</b>	396
<b>Human Swiss-Prot Number</b>	P52565
<b>Alternative Names</b>	ARHGDI; GDIA1; Rho GDP-dissociation inhibitor 1; Rho GDI 1; Rho-GDI alpha

### Background

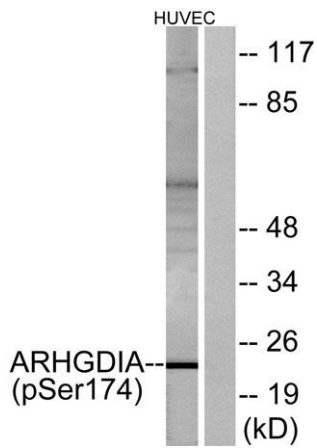
This gene encodes a protein that plays a key role in the regulation of signaling through Rho GTPases. The encoded protein inhibits the disassociation of Rho family members from GDP (guanine diphosphate), thereby maintaining these factors in an inactive state. Activity of this protein is important in a variety of cellular processes, and expression of this gene may be altered in tumors. Mutations in this gene have been found in individuals with nephrotic syndrome, type 8. Alternate splicing results in multiple transcript variants. [provided by RefSeq, Jul 2014],



**Enzyme-Linked Immunosorbent Assay (Phospho-ELISA) for Immunogen Phosphopeptide (Phospho-left) and Non-Phosphopeptide (Phospho-right), using ARHGDI (Phospho-Ser174) Antibody**



**Immunohistochemistry analysis of paraffin-embedded human cervix carcinoma, using ARHGDI (Phospho-Ser174) Antibody. The picture on the right is blocked with the phospho peptide.**



Western blot analysis of lysates from HUVEC cells treated with EGF 200ng/ml 30', using ARHGDI A (Phospho-Ser174) Antibody. The lane on the right is blocked with the phospho peptide.