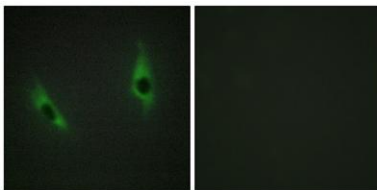


Laminin β -3 rabbit pAb**Cat#: orb768958 (Manual)**

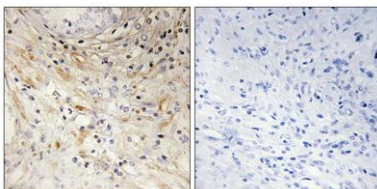
For research use only. Not intended for diagnostic use.

Product Name	Laminin β -3 rabbit pAb
Host species	Rabbit
Applications	IHC;IF;ELISA
Species Cross-Reactivity	Human;Rat;Mouse;
Recommended dilutions	Immunohistochemistry: 1/100 - 1/300. Immunofluorescence: 1/200 - 1/1000. ELISA: 1/5000. Not yet tested in other applications.
Immunogen	The antiserum was produced against synthesized peptide derived from human LAMB3. AA range:671-720
Specificity	Laminin β -3 Polyclonal Antibody detects endogenous levels of Laminin β -3 protein.
Formulation	Liquid in PBS containing 50% glycerol, 0.5% BSA and 0.02% sodium azide..
Storage	Store at -20°C. Avoid repeated freeze-thaw cycles.
Protein Name	Laminin subunit beta-3
Gene Name	LAMB3
Cellular localization	Secreted, extracellular space, extracellular matrix, basement membrane.
Purification	The antibody was affinity-purified from rabbit antiserum by affinity-chromatography using epitope-specific immunogen.
Clonality	Polyclonal

Concentration	1 mg/ml
Observed band	
Human Gene ID	3914
Human Swiss-Prot Number	Q13751
Alternative Names	LAMB3; LAMNB1; Laminin subunit beta-3; Epiligrin subunit bata; Kalinin B1 chain; Kalinin subunit beta; Laminin B1k chain; Laminin-5 subunit beta; Nicein subunit beta
Background	The product encoded by this gene is a laminin that belongs to a family of basement membrane proteins. This protein is a beta subunit laminin, which together with an alpha and a gamma subunit, forms laminin-5. Mutations in this gene cause epidermolysis bullosa junctional Herlitz type, and generalized atrophic benign epidermolysis bullosa, diseases that are characterized by blistering of the skin. Multiple alternatively spliced transcript variants that encode the same protein have been found for this gene. [provided by RefSeq, Jul 2008],



Immunofluorescence analysis of HeLa cells, using LAMB3 Antibody. The picture on the right is blocked with the synthesized peptide.



Immunohistochemistry analysis of paraffin-embedded human prostate carcinoma tissue, using LAMB3 Antibody. The picture on the right is blocked with the synthesized peptide.



Explore. Bioreagents.

www.biorbyt.com