

TBPL2 rabbit pAb**Cat#: orb768909 (Manual)**

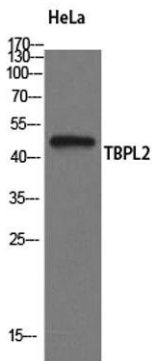
For research use only. Not intended for diagnostic use.

Product Name	TBPL2 rabbit pAb
Host species	Rabbit
Applications	WB;IHC;IF;ELISA
Species Cross-Reactivity	Human;Rat;Mouse;
Recommended dilutions	Western Blot: 1/500 - 1/2000. Immunohistochemistry: 1/100 - 1/300. ELISA: 1/5000. Not yet tested in other applications.
Immunogen	The antiserum was produced against synthesized peptide derived from human TBPL2. AA range:81-130
Specificity	TBPL2 Polyclonal Antibody detects endogenous levels of TBPL2 protein.
Formulation	Liquid in PBS containing 50% glycerol, 0.5% BSA and 0.02% sodium azide..
Storage	Store at -20°C. Avoid repeated freeze-thaw cycles.
Protein Name	TATA box-binding protein-like protein 2
Gene Name	TBPL2
Cellular localization	Cytoplasm . Nucleus . Present in the cytoplasm during cytokinesis. .
Purification	The antibody was affinity-purified from rabbit antiserum by affinity-chromatography using epitope-specific immunogen.
Clonality	Polyclonal

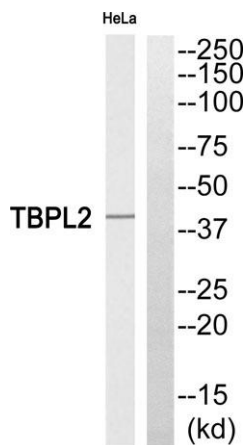
Concentration	1 mg/ml
Observed band	41kD
Human Gene ID	387332
Human Swiss-Prot Number	Q6SJ96
Alternative Names	TBPL2; TBP2; TRF3; TATA box-binding protein-like protein 2; TBP-like protein 2; TATA box-binding protein-related factor 3; TBP-related factor 3

Background

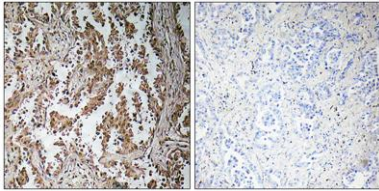
function:Transcription factor required in complex with TAF3 for the differentiation of myoblasts into myocytes. The complex replaces TFIID at specific promoters at an early stage in the differentiation process.,similarity:Belongs to the TBP family.,subcellular location:Present in the cytoplasm during cytokinesis.,subunit:Interacts with TAF3.,tissue specificity:Ubiquitously expressed in all tissues examined with highest levels in heart, lung, ovary, spleen and testes.,



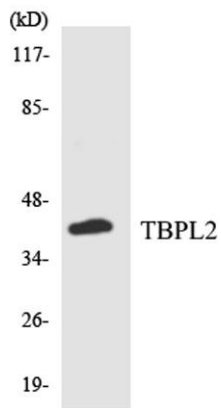
Western Blot analysis of HeLa cells using TBPL2 Polyclonal Antibody



Western blot analysis of TBPL2 Antibody. The lane on the right is blocked with the TBPL2 peptide.



Immunohistochemistry analysis of paraffin-embedded human lung carcinoma, using TBPL2 Antibody. The lane on the right is blocked with the TBPL2 peptide.



Western blot analysis of the lysates from COLO205 cells using TBPL2 antibody.